



MCM2 (ABT-MCM2) mouse mAb

Catalog No	BYab-15361
Isotype	IgG
Reactivity	Human;Mouse;Rat
Applications	IHC, WB
Gene Name	MCM2 BM28 CCNL1 CDCL1 KIAA0030
Protein Name	DNA replication licensing factor MCM2 (EC 3.6.4.12) (Minichromosome maintenance protein 2 homolog) (Nuclear protein BM28)
Immunogen	Synthesized peptide derived from human MCM2
Specificity	This antibody detects endogenous levels of human MCM2. Heat-induced epitope retrieval (HIER) TRIS-EDTA of pH8.0 was highly recommended as antigen repair method in paraffin section
Formulation	Liquid in PBS containing 50% glycerol, 0.5% BSA and 0.02% sodium azide.
Source	Mouse, Monoclonal/IgG1, Kappa
Purification	The antibody was affinity-purified from mouse ascites by affinity-chromatography using specific immunogen.
Dilution	IHC-p 1:100-500, WB 1:500-2000
Concentration	1 mg/ml
Purity	≥90%
Storage Stability	-20°C/1 year
Synonyms	
Observed Band	
Cell Pathway	Nucleus . Chromosome . Associated with chromatin before the formation of nuclei and detaches from it as DNA replication progresses. .
Tissue Specificity	Bone marrow,Brain,Cervix carcinoma,Colon carcinoma,Epitheli
Function	function:Acts as a factor that allows the DNA to undergo a single round of replication per cell cycle. Required for the entry in S phase and for cell division.,PTM:Phosphorylated on Ser-108 by ATR in proliferating cells. Ser-108 proliferation is increased by genotoxic agents. Ser-40 is mediated by the CDC7-DBF4 and CDC7-DBF4B complexes, while Ser-53 phosphorylation is only mediated by the CDC7-DBF4 complex.,sequence caution:Translation N-terminally shortened.,similarity:Belongs to the MCM family.,similarity:Contains 1 MCM domain.,subunit:Interacts with DBF4 (By similarity). Interacts with MYST2. May interact with MCM10.,

Nanjing BYabs science technology Co.,Ltd

**Background**

The protein encoded by this gene is one of the highly conserved mini-chromosome maintenance proteins (MCM) that are involved in the initiation of eukaryotic genome replication. The hexameric protein complex formed by MCM proteins is a key component of the pre-replication complex (pre_RC) and may be involved in the formation of replication forks and in the recruitment of other DNA replication related proteins. This protein forms a complex with MCM4, 6, and 7, and has been shown to regulate the helicase activity of the complex. This protein is phosphorylated, and thus regulated by, protein kinases CDC2 and CDC7. Multiple alternatively spliced transcript variants have been found, but the full-length nature of some variants has not been defined. [provided by RefSeq, Oct 2012],

matters needing attention

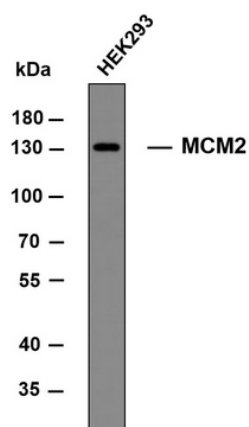
Avoid repeated freezing and thawing!

Usage suggestions

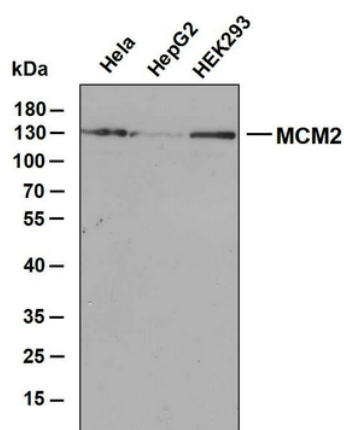
This product can be used in immunological reaction related experiments. For more information, please consult technical personnel.



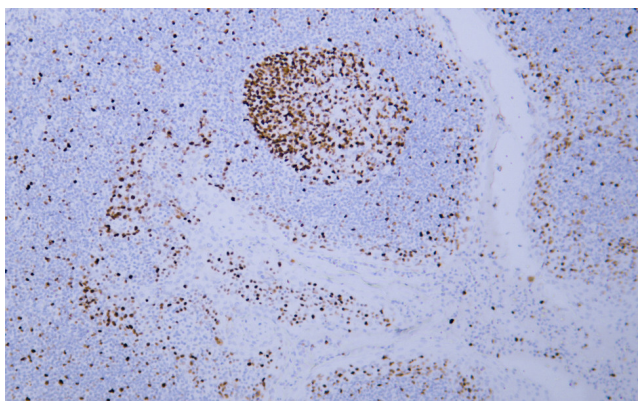
Products Images



Whole cell lysates of HEK293 were separated by 8% SDS-PAGE, and the membrane was blotted with anti-MCM2 antibody. The HRP-conjugated anti-Mouse IgG antibody was used to detect the antibody.
Predicted band size: 102(130) kDa



Various whole cell lysates were separated by 10% SDS-PAGE, and the membrane was blotted with anti-MCM2 antibody. The HRP-conjugated anti-Mouse IgG antibody was used to detect the antibody.
Predicted band size: 102 kDa Observed band size: 130 kDa



Human tonsil tissue was stained with Anti-MCM2 (ABT-MCM2) Antibody