



# Tissue Inhibitor of Metalloproteinases 1(PT2236) mouse mAb

<b>Catalog No</b>	BYab-15422
<b>Isotype</b>	IgG
<b>Reactivity</b>	Human
<b>Applications</b>	IHC;IF
<b>Gene Name</b>	TIMP1 CLGI TIMP
<b>Protein Name</b>	Metalloproteinase inhibitor 1 (Erythroid-potentiating activity) (EPA) (Fibroblast collagenase inhibitor) (Collagenase inhibitor) (Tissue inhibitor of metalloproteinases 1) (TIMP-1)
<b>Immunogen</b>	Synthesized peptide derived from human Tissue Inhibitor of Metalloproteinases 1(TIMP1)
<b>Specificity</b>	This antibody detects endogenous levels of human Metalloproteinase inhibitor 1 (Erythroid-potentiating activity) (EPA) (Fibroblast collagenase inhibitor) (Collagenase inhibitor) (Tissue inhibitor of m
<b>Formulation</b>	Liquid in PBS containing 50% glycerol, 0.5% BSA and 0.02% sodium azide.
<b>Source</b>	Mouse, Monoclonal/IgG1, Kappa
<b>Purification</b>	The antibody was affinity-purified from mouse ascites by affinity-chromatography using specific immunogen.
<b>Dilution</b>	WB 500-2000 IHC-p 1:100-500. IF 1:50-200
<b>Concentration</b>	1 mg/ml
<b>Purity</b>	≥90%
<b>Storage Stability</b>	-20°C/1 year
<b>Synonyms</b>	
<b>Observed Band</b>	
<b>Cell Pathway</b>	Secreted .
<b>Tissue Specificity</b>	Detected in rheumatoid synovial fluid (at protein level).
<b>Function</b>	function:Complexes with metalloproteinases (such as collagenases) and irreversibly inactivates them. Also mediates erythropoiesis in vitro; but, unlike IL-3, it is species-specific, stimulating the growth and differentiation of only human and murine erythroid progenitors. Known to act on MMP-1, MMP-2, MMP-3, MMP-7, MMP-8, MMP-9, MMP-10, MMP-11, MMP-12, MMP-13 and MMP-16. Does not act on MMP-14.,PTM:The activity of TIMP1 is dependent on the presence of disulfide bonds.,similarity:Belongs to the protease inhibitor I35 (TIMP)

**Nanjing BYabscience technology Co.,Ltd**



family.,similarity:Contains 1 NTR domain.,

**Background**

This gene belongs to the TIMP gene family. The proteins encoded by this gene family are natural inhibitors of the matrix metalloproteinases (MMPs), a group of peptidases involved in degradation of the extracellular matrix. In addition to its inhibitory role against most of the known MMPs, the encoded protein is able to promote cell proliferation in a wide range of cell types, and may also have an anti-apoptotic function. Transcription of this gene is highly inducible in response to many cytokines and hormones. In addition, the expression from some but not all inactive X chromosomes suggests that this gene inactivation is polymorphic in human females. This gene is located within intron 6 of the synapsin I gene and is transcribed in the opposite direction. [provided by RefSeq, Jul 2008],

**matters needing attention**

Avoid repeated freezing and thawing!

**Usage suggestions**

This product can be used in immunological reaction related experiments. For more information, please consult technical personnel.

Nanjing BYabscience technology Co.,Ltd

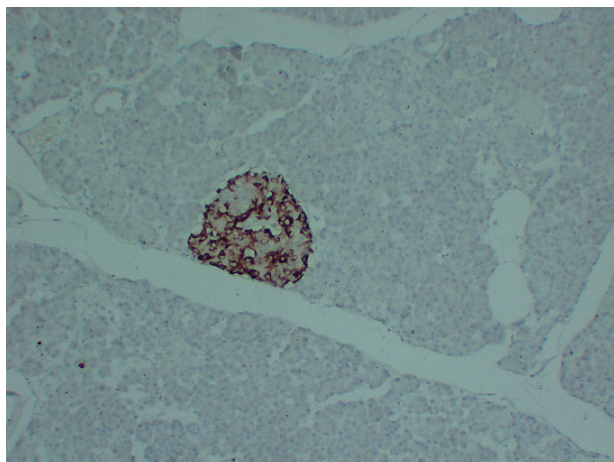
网址: [www.njbybio.com](http://www.njbybio.com)

官方热线: 025-5229-8998

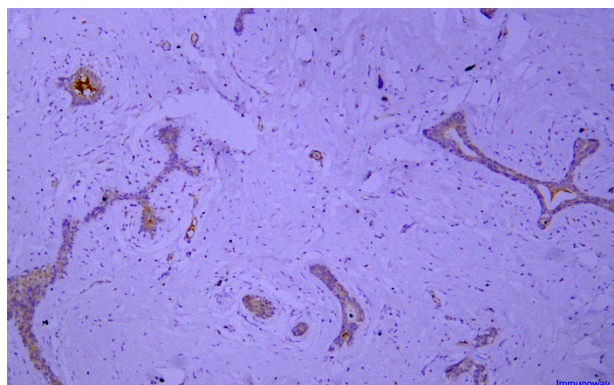
监督电话: 15950492658



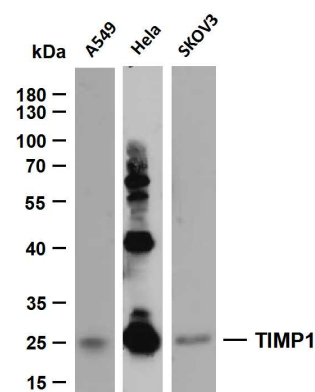
## Products Images



Immunohistochemical analysis of paraffin-embedded human Pancreas. 1, Tissue Inhibitor of Metalloproteinases 1 (TIMP1) Antibody was diluted at 1:200 (4° overnight). 2, Citrate buffer of pH 6.0 was used for antigen retrieval



Immunohistochemical analysis of paraffin-embedded human breast tissue. Antibody was diluted at 1:200 (4° overnight).



Various whole cell lysates were separated by 10% SDS-PAGE, and the membrane was blotted with anti-TIMP1 (PT2236) antibody. The HRP-conjugated Goat anti-Mouse IgG (H + L) antibody was used to detect the antibody. Lane 1: A549 Lane 2: HeLa Lane 3: SKOV3 Predicted band size: 23 kDa Observed band size: 23 kDa

Nanjing BYabs science technology Co., Ltd

网址: [www.njbybio.com](http://www.njbybio.com)

官方热线: 025-5229-8998

监督电话: 15950492658