



# Neuron-Specific Enolase(NSE) mouse mAb(PT2281)

<b>Catalog No</b>	BYab-15472
<b>Isotype</b>	IgG
<b>Reactivity</b>	Human;Mouse;Rat
<b>Applications</b>	IHC, WB
<b>Gene Name</b>	ENO2
<b>Protein Name</b>	Neuron-Specific Enolase(NSE)
<b>Immunogen</b>	Synthesized peptide derived from human Neuron-Specific Enolase(NSE)
<b>Specificity</b>	This antibody detects endogenous levels of human Neuron-Specific Enolase(NSE). Heat-induced epitope retrieval (HIER) TRIS-EDTA of pH9.0 was highly recommended as antigen repair method in paraffin sect
<b>Formulation</b>	Liquid in PBS containing 50% glycerol, 0.5% BSA and 0.02% sodium azide.
<b>Source</b>	Mouse, Monoclonal/IgG1, Kappa
<b>Purification</b>	The antibody was affinity-purified from mouse ascites by affinity-chromatography using specific immunogen.
<b>Dilution</b>	IHC-p 1:100-500, WB 1:200-1000
<b>Concentration</b>	1 mg/ml
<b>Purity</b>	≥90%
<b>Storage Stability</b>	-20°C/1 year
<b>Synonyms</b>	Gamma-enolase (EC 4.2.1.11;2-phospho-D-glycerate hydro-lyase;Enolase 2;Neural enolase;Neuron-specific enolase;NSE)
<b>Observed Band</b>	
<b>Cell Pathway</b>	Cytoplasm . Cell membrane . Can translocate to the plasma membrane in either the homodimeric (alpha/alpha) or heterodimeric (alpha/gamma) form. .
<b>Tissue Specificity</b>	The alpha/alpha homodimer is expressed in embryo and in most adult tissues. The alpha/beta heterodimer and the beta/beta homodimer are found in striated muscle, and the alpha/gamma heterodimer and the gamma/gamma homodimer in neurons.
<b>Function</b>	catalytic activity:2-phospho-D-glycerate = phosphoenolpyruvate + H(2)O.,cofactor:Magnesium. Required for catalysis and for stabilizing the dimer.,developmental stage:During ontogenesis, there is a transition from the alpha/alpha homodimer to the alpha/beta heterodimer in striated muscle cells, and to the alpha/gamma heterodimer in nerve cells.,function:Has neurotrophic and neuroprotective properties on a broad spectrum of central nervous system (CNS) neurons. Binds, in a calcium-dependent manner, to cultured neocortical

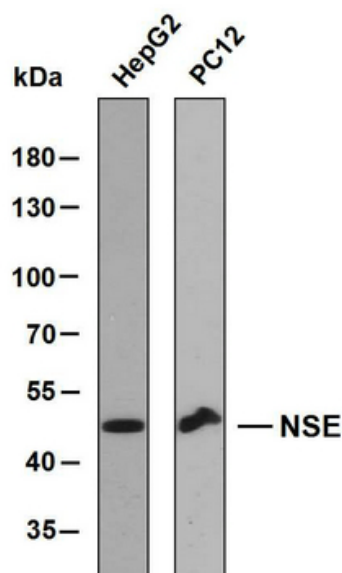
**Nanjing BYabscience technology Co.,Ltd**



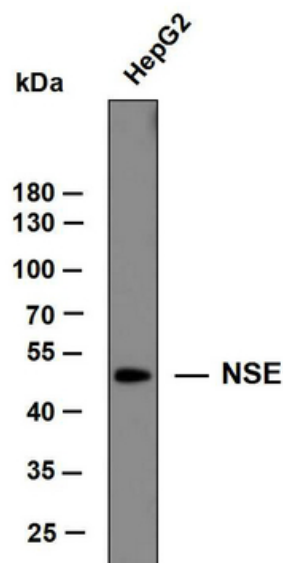
	neurons and promotes cell survival.,induction:Levels of ENO2 increase dramatically in cardiovascular accidents, cerebral trauma, brain tumors and Creutzfeldt-Jacob disease.,pathway:Carbohydrate degradation; glycolysis; pyruvate from D-glyceraldehyde 3-phosphate: step 4/5.,similarity:Belongs to the enolase family.,subcellular location:Can translocate to the plasma membrane
Background	enolase 2(ENO2) Homo sapiens This gene encodes one of the three enolase isoenzymes found in mammals. This isoenzyme, a homodimer, is found in mature neurons and cells of neuronal origin. A switch from alpha enolase to gamma enolase occurs in neural tissue during development in rats and primates. [provided by RefSeq, Jul 2008],
matters needing attention	Avoid repeated freezing and thawing!
Usage suggestions	This product can be used in immunological reaction related experiments. For more information, please consult technical personnel.



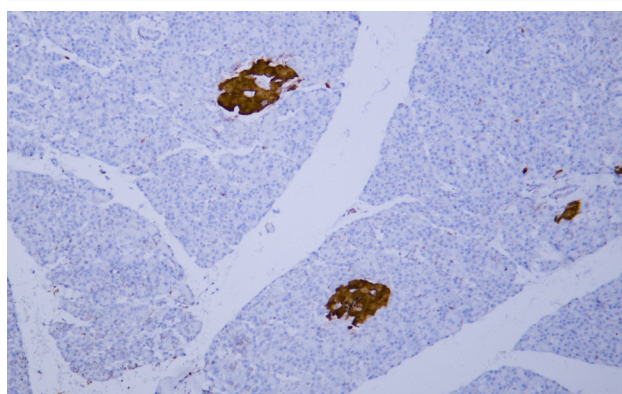
## Products Images



Various whole cell lysates were separated by 8% SDS-PAGE, and the membrane was blotted with anti-NSE antibody. The HRP-conjugated anti-Mouse IgG antibody was used to detect the antibody. Predicted band size: 47 kDa



Whole cell lysates of HepG2 were separated by 10% SDS-PAGE, and the membrane was blotted with anti-NSE antibody. The HRP-conjugated anti-Mouse IgG antibody was used to detect the antibody. Predicted band size: 47 kDa



Human pancreas tissue was stained with Anti-Neuron-Specific Enolase (ABT209) Antibody



Nanjing BYabscience technology Co.,Ltd

网址: [www.njbybio.com](http://www.njbybio.com)

官方热线: 025-5229-8998

监督电话: 15950492658