



Galectin 3 mouse mAb(ABT-GAL3)

Catalog No	BYab-15481
Isotype	IgG
Reactivity	Human
Applications	IHC, WB
Gene Name	LGALS3 MAC2
Protein Name	Galectin 3
Immunogen	Synthesized peptide derived from human Galectin 3
Specificity	This antibody detects endogenous levels of human Galectin 3, TRIS-EDTA of pH9.0 was used for Heat-induced epitope retrieval (HIER)
Formulation	Liquid in PBS containing 50% glycerol, 0.5% BSA and 0.02% sodium azide.
Source	Mouse, Monoclonal/IgG2b, Kappa
Purification	The antibody was affinity-purified from mouse ascites by affinity-chromatography using specific immunogen.
Dilution	IHC-p 1:50-500 WB 1:1000-2000
Concentration	1 mg/ml
Purity	≥90%
Storage Stability	-20°C/1 year
Synonyms	Galectin-3 (Gal-3;35 kDa lectin;Carbohydrate-binding protein 35;CBP 35;Galactose-specific lectin 3;Galactoside-binding protein;GALBP;IgE-binding protein;L-31;Laminin-binding protein;Lectin L-29;Mac-2 antigen)
Observed Band	
Cell Pathway	Cytoplasm . Nucleus. Secreted . Secreted by a non-classical secretory pathway and associates with the cell surface. Can be secreted; the secretion is dependent on protein unfolding and facilitated by the cargo receptor TMED10; it results in protein translocation from the cytoplasm into the ERGIC (endoplasmic reticulum-Golgi intermediate compartment) followed by vesicle entry and secretion (PubMed:32272059). .
Tissue Specificity	A major expression is found in the colonic epithelium. It is also abundant in the activated macrophages. Expressed in fetal membranes.
Function	function:Galactose-specific lectin which binds IgE. May mediate with the alpha-3, beta-1 integrin the stimulation by CSPG4 of endothelial cells migration. Together with DMBT1, required for terminal differentiation of columnar epithelial cells during early embryogenesis.,online information:Galectin-3,similarity:Contains 1 galectin domain.,subcellular location:Cytoplasmic in adenomas and carcinomas. May be

Nanjing BYabscience technology Co.,Ltd



secreted by a non-classical secretory pathway and associate with the cell surface.,subunit:Probably forms homo- or heterodimers. Interacts with DMBT1 (By similarity). Forms a complex with the ITGA3, ITGB1 and CSPG4. Interacts with LGALS3BP, LYPD3, CYHR1 and UACA.,tissue specificity:A major expression is found in the colonic epithelium. It is also abundant in the activated macrophages.,

Background

This gene encodes a member of the galectin family of carbohydrate binding proteins. Members of this protein family have an affinity for beta-galactosides. The encoded protein is characterized by an N-terminal proline-rich tandem repeat domain and a single C-terminal carbohydrate recognition domain. This protein can self-associate through the N-terminal domain allowing it to bind to multivalent saccharide ligands. This protein localizes to the extracellular matrix, the cytoplasm and the nucleus. This protein plays a role in numerous cellular functions including apoptosis, innate immunity, cell adhesion and T-cell regulation. The protein exhibits antimicrobial activity against bacteria and fungi. Alternate splicing results in multiple transcript variants.[provided by RefSeq, Oct 2014],

matters needing attention

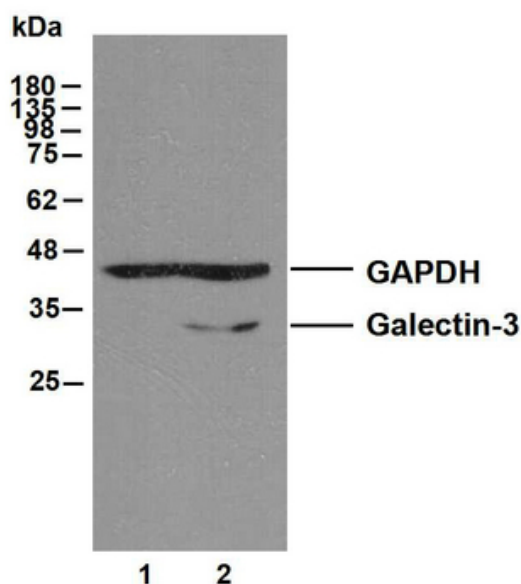
Avoid repeated freezing and thawing!

Usage suggestions

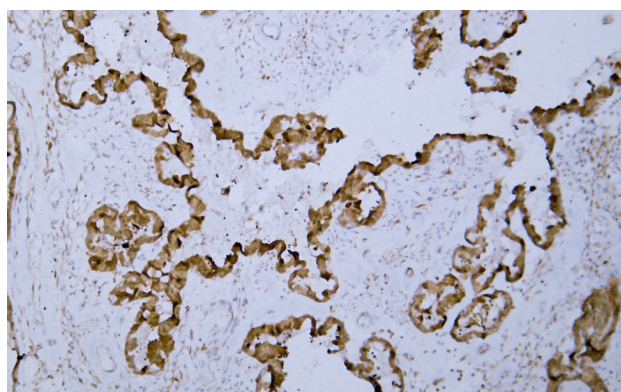
This product can be used in immunological reaction related experiments. For more information, please consult technical personnel.



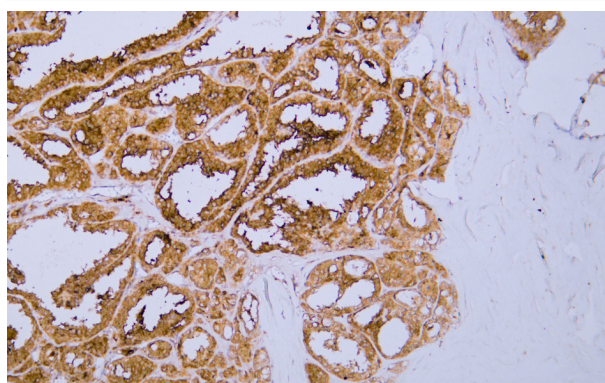
Products Images



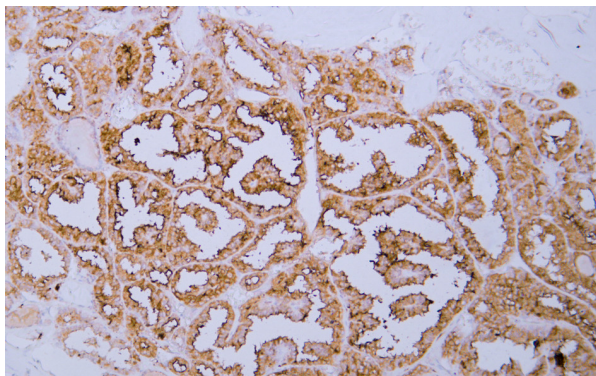
Various whole cell lysates were separated by 10% SDS-PAGE, and the membrane was blotted with anti-Galectin-3 and anti-GAPDH antibody. The HRP-conjugated anti-Mouse IgG antibody was used to detect the antibody. Lane 1 : Galectin-3 knockout HeLa cell lysate Lane 2 : Wild type HeLa cell lysate Predicted band size: 30 kDa Observed band size: 30 kDa



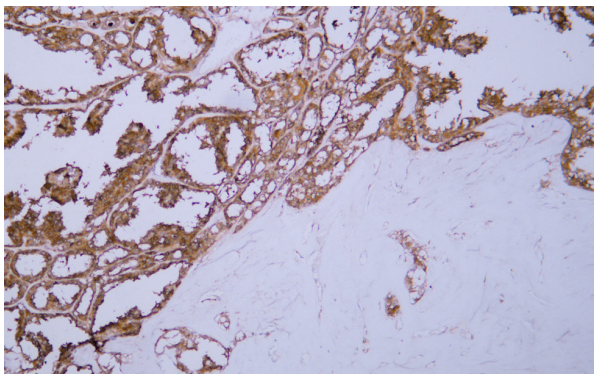
Human ovarian carcinoma tissue was stained with Anti-Galectin 3 (ABT-GAL3) Antibody



Human thyroid papillary carcinoma tissue was stained with Anti-Galectin 3 (ABT-GAL3) Antibody



Human thyroid papillary carcinoma tissue was stained with Anti-Galectin 3 (ABT-GAL3) Antibody



Human thyroid papillary carcinoma tissue was stained with Anti-Galectin 3 (ABT-GAL3) Antibody