



# GST-Pi mouse mAb(ABT-GSTP1)

|                           |   |
|---------------------------|---|
| <b>Catalog No</b>         | BYab-15482  |
| <b>Isotype</b>            | IgG   |
| <b>Reactivity</b>         | Human   |
| <b>Applications</b>       | IHC;IF  |
| <b>Gene Name</b>          | GSTP1 FAEES3 GST3   |
| <b>Protein Name</b>       | GST-Pi  |
| <b>Immunogen</b>          | Synthesized peptide derived from human GST-Pi   |
| <b>Specificity</b>        | This antibody detects endogenous levels of human GST-Pi, TRIS-EDTA of pH9.0 was used for Heat-induced epitope retrieval (HIER)  |
| <b>Formulation</b>        | Liquid in PBS containing 50% glycerol, 0.5% BSA and 0.02% sodium azide.   |
| <b>Source</b>             | Monoclonal, Mouse   |
| <b>Purification</b>       | The antibody was affinity-purified from mouse ascites by affinity-chromatography using specific immunogen.  |
| <b>Dilution</b>           | IHC-p 1:50-500 WB 1:1000-2000. IF 1:50-200  |
| <b>Concentration</b>      | 1 mg/ml   |
| <b>Purity</b>             | ≥90%  |
| <b>Storage Stability</b>  | -20°C/1 year  |
| <b>Synonyms</b>           | Glutathione S-transferase P (EC 2.5.1.18;GST class-pi;GSTP1-1)  |
| <b>Observed Band</b>      |   |
| <b>Cell Pathway</b>       | Cytoplasm . Mitochondrion . Nucleus . The 83 N-terminal amino acids function as un cleaved transit peptide, and arginine residues within it are crucial for mitochondrial localization.   |
| <b>Tissue Specificity</b> |   |
| <b>Function</b>           | catalytic activity:RX + glutathione = HX + R-S-glutathione.,function:Conjugation of reduced glutathione to a wide number of exogenous and endogenous hydrophobic electrophiles.,online information:The Singapore human mutation and polymorphism database,similarity:Belongs to the GST superfamily. Pi family.,similarity:Contains 1 GST C-terminal domain.,similarity:Contains 1 GST N-terminal domain.,subunit:Homodimer., |
| <b>Background</b>         | Glutathione S-transferases (GSTs) are a family of enzymes that play an important role in detoxification by catalyzing the conjugation of many hydrophobic and electrophilic compounds with reduced glutathione. Based on their biochemical, immunologic, and structural properties, the soluble GSTs are  |

**Nanjing BYabscience technology Co.,Ltd**



categorized into 4 main classes: alpha, mu, pi, and theta. This GST family member is a polymorphic gene encoding active, functionally different GSTP1 variant proteins that are thought to function in xenobiotic metabolism and play a role in susceptibility to cancer, and other diseases. [provided by RefSeq, Jul 2008],

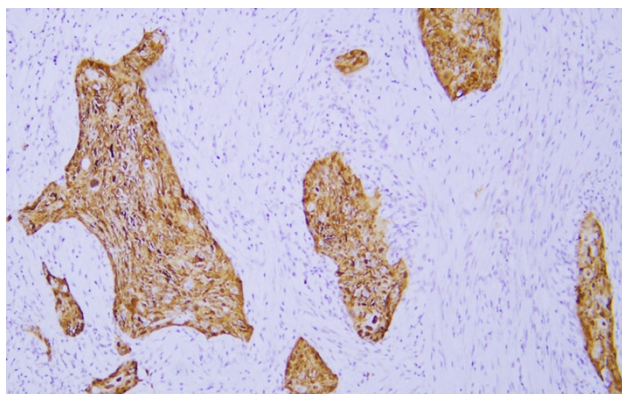
**matters needing attention**

Avoid repeated freezing and thawing!

**Usage suggestions**

This product can be used in immunological reaction related experiments. For more information, please consult technical personnel.

## Products Images



Immunohistochemical analysis of paraffin-embedded human Esophageal\_squamous\_cell\_carcinoma. 1, Antibody was diluted at 1:200(4° overnight). 2, TRIS-EDTA of pH9.0 was used for antigen retrieval. 3,Secondary antibody was diluted at 1:200(room temperature, 30min).