



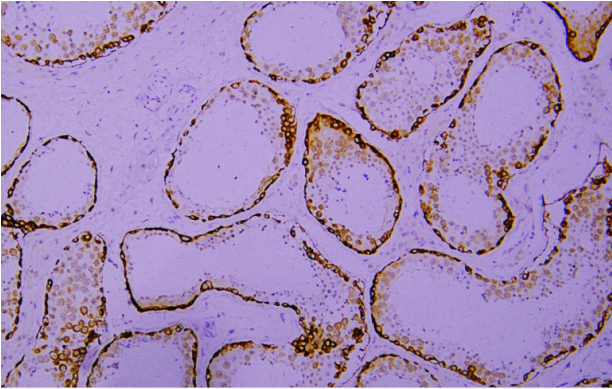
# MAGE-C1 rabbit mAb(ABT71R)

<b>Catalog No</b>	BYab-15507
<b>Isotype</b>	IgG
<b>Reactivity</b>	Human
<b>Applications</b>	IHC;IF
<b>Gene Name</b>	MAGEC1
<b>Protein Name</b>	MAGE-C1
<b>Immunogen</b>	Synthesized peptide derived from human MAGE-C1
<b>Specificity</b>	This antibody detects endogenous levels of MAGE-C1 at Human
<b>Formulation</b>	Liquid in PBS containing 50% glycerol, 0.5% BSA and 0.02% sodium azide.
<b>Source</b>	Polyclonal, Rabbit,IgG
<b>Purification</b>	The antibody was affinity-purified from Cell supernatant by affinity-chromatography using specific immunogen.
<b>Dilution</b>	IHC-p 1:5. IF 1:50-200
<b>Concentration</b>	1 mg/ml
<b>Purity</b>	≥90%
<b>Storage Stability</b>	-20°C/1 year
<b>Synonyms</b>	Melanoma-associated antigen C1 (Cancer/testis antigen 7.1;CT7.1;MAGE-C1 antigen)
<b>Observed Band</b>	
<b>Cell Pathway</b>	
<b>Tissue Specificity</b>	Expressed in testis and in tumors of a wide variety of histologic types.
<b>Function</b>	similarity:Contains 1 MAGE domain.,tissue specificity:Expressed in testis and in tumors of a wide variety of histologic types.,
<b>Background</b>	
<b>matters needing attention</b>	Avoid repeated freezing and thawing!
<b>Usage suggestions</b>	This product can be used in immunological reaction related experiments. For more information, please consult technical personnel.

**Nanjing BYabscience technology Co.,Ltd**



## Products Images



Immunohistochemical analysis of paraffin-embedded human Testis. 1, Antibody was incubated at 4° overnight. 2, TRIS-EDTA of pH8.0 was used for antigen retrieval. 3, Secondary antibody was diluted at 1:200(room temperature, 30min).