



# MUC4 rabbit mAb(ABT174R)

<b>Catalog No</b>	BYab-15511
<b>Isotype</b>	IgG
<b>Reactivity</b>	Human
<b>Applications</b>	IHC;IF
<b>Gene Name</b>	MUC4
<b>Protein Name</b>	MUC4
<b>Immunogen</b>	Synthesized peptide derived from human MUC4
<b>Specificity</b>	This antibody detects endogenous levels of MUC4 at Human
<b>Formulation</b>	Liquid in PBS containing 50% glycerol, 0.5% BSA and 0.02% sodium azide.
<b>Source</b>	Polyclonal, Rabbit,IgG
<b>Purification</b>	The antibody was affinity-purified from Cell supernatant by affinity-chromatography using specific immunogen.
<b>Dilution</b>	IHC-p 1:50. IF 1:50-200
<b>Concentration</b>	1 mg/ml
<b>Purity</b>	≥90%
<b>Storage Stability</b>	-20°C/1 year
<b>Synonyms</b>	Mucin-4 (MUC-4;Ascites sialoglycoprotein;ASGP;Pancreatic adenocarcinoma mucin;Testis mucin;Tracheobronchial mucin) [Cleaved into: Mucin-4 alpha chain (Ascites sialoglycoprotein 1;ASGP-1); Mucin-4 beta chain (Ascites sialoglycoprotein 2;ASGP-2)]
<b>Observed Band</b>	
<b>Cell Pathway</b>	[Mucin-4 beta chain]: Cell membrane ; Single-pass membrane protein . Isoforms lacking the Cys-rich region, EGF-like domains and transmembrane region are secreted. Secretion occurs by splicing or proteolytic processing. .; [Mucin-4 alpha chain]: Cell membrane . Secreted . Forms a complex with Mucin-4 beta chain at the cell membrane. .; [Isoform 3]: Cell membrane ; Single-pass membrane protein .; [Isoform 11]: Secreted .; [Isoform 15]: Secreted .; [Isoform 17]: Cell membrane ; Single-pass membrane protein .
<b>Tissue Specificity</b>	Expressed in the thymus, thyroid, lung, trachea, esophagus, stomach, small intestine, colon, testis, prostate, ovary, uterus, placenta, and mammary and salivary glands. Expressed in carcinomas arising from some of these epithelia, such as lung cancers, squamous cell carcinomas of the upper aerodigestive tract, mammary carcinomas, biliary tract, colon, and cervix cancers. Minimally or not

**Nanjing BYabscience technology Co.,Ltd**



expressed in the normal pancreas or chronic pancreatitis, but is highly expressed in pancreatic tumors and pancreatic tumor cell lines.

**Function**

alternative products:Additional isoforms exist,developmental stage:Expressed early in the primitive gut before respiratory and digestive epithelial cells have acquired their tissue and cell specificity. Expressed at the basal surface of the epithelium from week 14 to 26 weeks and then predominantly localized in only parietal cells. Immediately before birth, found in the cytoplasm of the mucous columnar epithelial cells. In the embryo expressed in skin, then disappears late in gestation.,function:May play a role in tumor progression. Ability to promote tumor growth may be mainly due to repression of apoptosis as opposed to proliferation. Has anti-adhesive properties. Seems to alter cellular behavior through both anti-adhesive effects on cell-cell and cell-extracellular matrix interactions and in its ability to act as an intramembrane ligand for ERBB2. Plays an important role in cell proli

**Background****matters needing attention**

Avoid repeated freezing and thawing!

**Usage suggestions**

This product can be used in immunological reaction related experiments. For more information, please consult technical personnel.

**Nanjing BYabscience technology Co.,Ltd**

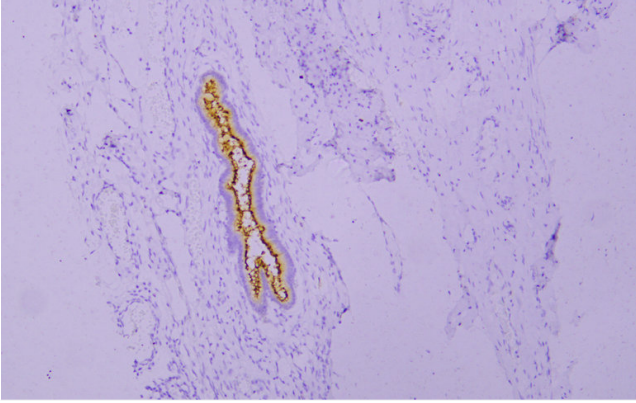
网址: [www.njbybio.com](http://www.njbybio.com)

官方热线: 025-5229-8998

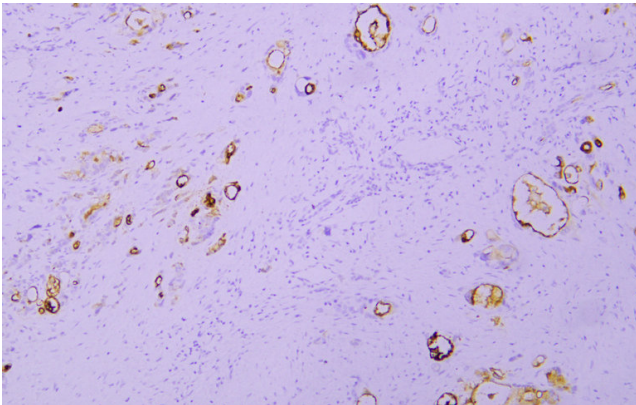
监督电话: 15950492658



## Products Images



Immunohistochemical analysis of paraffin-embedded human Cervical squamous carcinoma. 1, Antibody was incubated at 4° overnight. 2, Citrate buffer of pH6.0 was used for antigen retrieval. 3, Secondary antibody was diluted at 1:200 (room temperature, 30min).



Immunohistochemical analysis of paraffin-embedded human Pancreatic carcinoma. 1, Antibody was incubated at 4° overnight. 2, Citrate buffer of pH6.0 was used for antigen retrieval. 3, Secondary antibody was diluted at 1:200 (room temperature, 30min).