



# Calponin-1 rabbit mAb(ABT145R)

<b>Catalog No</b>	BYab-15515
<b>Isotype</b>	IgG
<b>Reactivity</b>	Human
<b>Applications</b>	IHC;IF
<b>Gene Name</b>	CNN1
<b>Protein Name</b>	Calponin-1
<b>Immunogen</b>	Synthesized peptide derived from human Calponin-1
<b>Specificity</b>	This antibody detects endogenous levels of Calponin-1 at Human
<b>Formulation</b>	Liquid in PBS containing 50% glycerol, 0.5% BSA and 0.02% sodium azide.
<b>Source</b>	Polyclonal, Rabbit,IgG
<b>Purification</b>	The antibody was affinity-purified from Cell supernatant by affinity-chromatography using specific immunogen.
<b>Dilution</b>	IHC-p 1:5-1:10. IF 1:50-200
<b>Concentration</b>	1 mg/ml
<b>Purity</b>	≥90%
<b>Storage Stability</b>	-20°C/1 year
<b>Synonyms</b>	Calponin-1 (Basic calponin;Calponin H1, smooth muscle)
<b>Observed Band</b>	
<b>Cell Pathway</b>	cytoskeleton,focal adhesion,
<b>Tissue Specificity</b>	Smooth muscle, and tissues containing significant amounts of smooth muscle.
<b>Function</b>	function:Thin filament-associated protein that is implicated in the regulation and modulation of smooth muscle contraction. It is capable of binding to actin, calmodulin, troponin C and tropomyosin. The interaction of calponin with actin inhibits the actomyosin Mg-ATPase activity.,similarity:Belongs to the calponin family.,similarity:Contains 1 CH (calponin-homology) domain.,similarity:Contains 3 calponin-like repeats.,subunit:Part of cGMP kinase signaling complex at least composed of ACTA2/alpha-actin, CNN1/calponin H1, PLN/phospholamban, PRKG1 and ITPR1.,tissue specificity:Smooth muscle, and tissues containing significant amounts of smooth muscle.,
<b>Background</b>	

**Nanjing BYabscience technology Co.,Ltd**



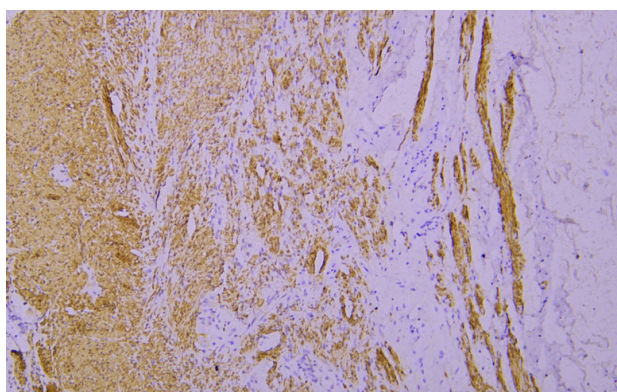
**matters needing attention**

Avoid repeated freezing and thawing!

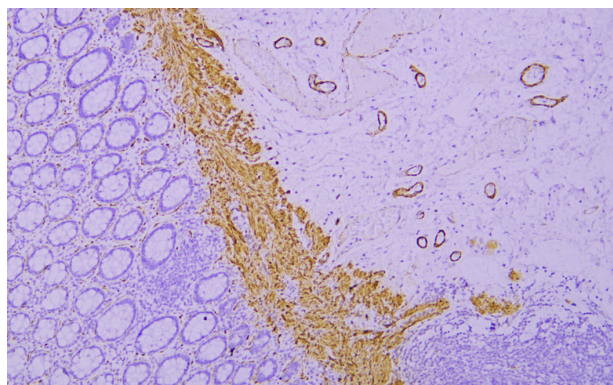
**Usage suggestions**

This product can be used in immunological reaction related experiments. For more information, please consult technical personnel.

## Products Images



Immunohistochemical analysis of paraffin-embedded human Appendix. 1, Antibody was incubated at 4° overnight. 2, Citrate buffer of pH6.0 was used for antigen retrieval. 3, Secondary antibody was diluted at 1:200(room temperature, 30min).



Immunohistochemical analysis of paraffin-embedded human Colon. 1, Antibody was incubated at 4° overnight. 2, Citrate buffer of pH6.0 was used for antigen retrieval. 3, Secondary antibody was diluted at 1:200(room temperature, 30min).

Nanjing BYabs science technology Co.,Ltd

网址: [www.njbybio.com](http://www.njbybio.com)

官方热线: 025-5229-8998

监督电话: 15950492658