



# Her-2 mouse mAb(ABT338)

|                           |   |
|---------------------------|---|
| <b>Catalog No</b>         | BYab-15520  |
| <b>Isotype</b>            | IgG   |
| <b>Reactivity</b>         | Human; Predict react with Mouse, Rat  |
| <b>Applications</b>       | IHC;WB;IF   |
| <b>Gene Name</b>          | ERBB2 HER2 MLN19 NEU NGL  |
| <b>Protein Name</b>       | Her-2   |
| <b>Immunogen</b>          | Synthesized peptide derived from human Her-2  |
| <b>Specificity</b>        | The antibody can specifically recognize human Her-2 protein.  |
| <b>Formulation</b>        | Liquid in PBS containing 50% glycerol, 0.5% BSA and 0.40% sodium azide.   |
| <b>Source</b>             | Mouse, Monoclonal/IgG2a, Kappa  |
| <b>Purification</b>       | The antibody was affinity-purified from mouse ascites by affinity-chromatography using specific immunogen.  |
| <b>Dilution</b>           | IHC-p 1:100-500, WB 1:200-1000, IF 1:100-500  |
| <b>Concentration</b>      | 1 mg/ml   |
| <b>Purity</b>             | ≥90%  |
| <b>Storage Stability</b>  | -20°C/1 year  |
| <b>Synonyms</b>           | Receptor tyrosine-protein kinase erbB-2 (EC 2.7.10.1;Metastatic lymph node gene 19 protein;MLN 19;Proto-oncogene Neu;Proto-oncogene c-ErbB-2;Tyrosine kinase-type cell surface receptor HER2;p185erbB2;CD antigen CD340)  |
| <b>Observed Band</b>      |   |
| <b>Cell Pathway</b>       | [Isoform 1]: Cell membrane ; Single-pass type I membrane protein. Early endosome . Cytoplasm, perinuclear region. Nucleus. Translocation to the nucleus requires endocytosis, probably endosomal sorting and is mediated by importin beta-1/KPNB1. Also detected in VPS35-positive endosome-to-TGN retrograde vesicles (PubMed:31138794). .; [Isoform 2]: Cytoplasm. Nucleus.; [Isoform 3]: Cytoplasm. Nucleus. |
| <b>Tissue Specificity</b> | Expressed in a variety of tumor tissues including primary breast tumors and tumors from small bowel, esophagus, kidney and mouth.   |
| <b>Function</b>           | catalytic activity:ATP + a [protein]-L-tyrosine = ADP + a [protein]-L-tyrosine phosphate.;disease:Defects in ERBB2 are associated with familial glioma of brain [MIM:137800]; also called glioblastoma multiforme. Gliomas are central nervous system neoplasms derived from glial cells and comprise astrocytomas, glioblastoma multiforme, oligodendrogliomas, and  |

**Nanjing BYabs science technology Co.,Ltd**



ependymomas.,disease:Defects in ERBB2 are associated with gastric cancer [MIM:137215]; also known as hereditary familial diffuse gastric cancer (HDGC).,disease:Defects in ERBB2 are associated with lung cancer [MIM:211980]; also called adenocarcinoma of lung.,disease:Defects in ERBB2 are associated with ovarian cancer [MIM:167000]. Ovarian cancer is the leading cause of death from gynecologic malignancy. It is characterized by advanced presentation with loco-regional dissemination in the peritoneal cavity and the rare incidence of viscera

#### Background

This gene encodes a member of the epidermal growth factor (EGF) receptor family of receptor tyrosine kinases. This protein has no ligand binding domain of its own and therefore cannot bind growth factors. However, it does bind tightly to other ligand-bound EGF receptor family members to form a heterodimer, stabilizing ligand binding and enhancing kinase-mediated activation of downstream signalling pathways, such as those involving mitogen-activated protein kinase and phosphatidylinositol-3 kinase. Allelic variations at amino acid positions 654 and 655 of isoform a (positions 624 and 625 of isoform b) have been reported, with the most common allele, Ile654/Ile655, shown here. Amplification and/or overexpression of this gene has been reported in numerous cancers, including breast and ovarian tumors. Alternative splicing results in several additional transcript variants, some encoding d

#### matters needing attention

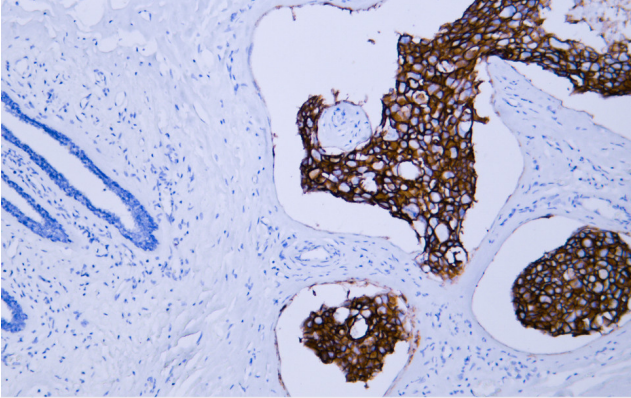
Avoid repeated freezing and thawing!

#### Usage suggestions

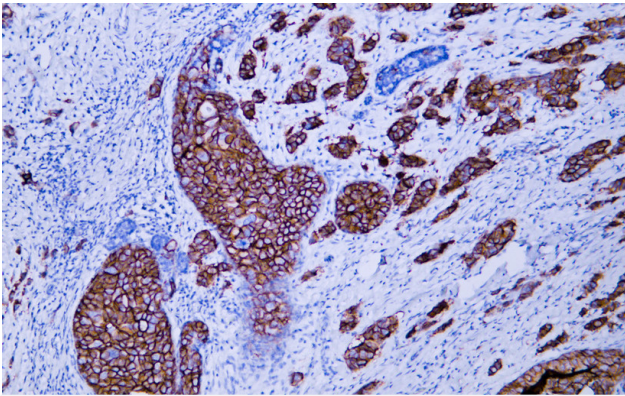
This product can be used in immunological reaction related experiments. For more information, please consult technical personnel.



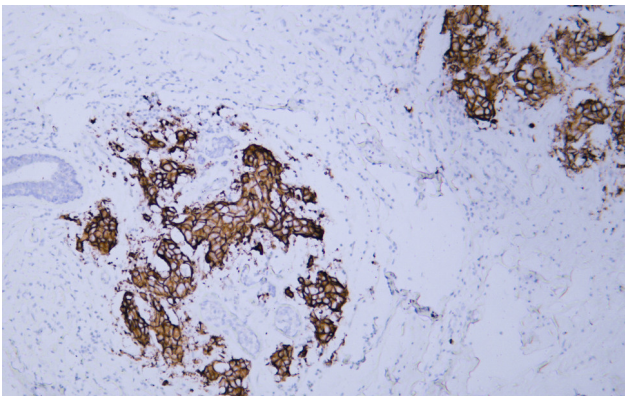
## Products Images



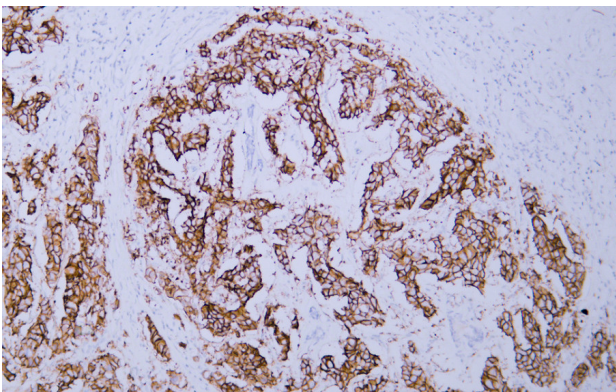
Human breast carcinoma tissue was stained with Anti-Her-2 (ABT338) Antibody



Human breast carcinoma tissue was stained with Anti-Her-2 (ABT338) Antibody



Human breast carcinoma tissue was stained with Anti-Her-2 (ABT338) Antibody



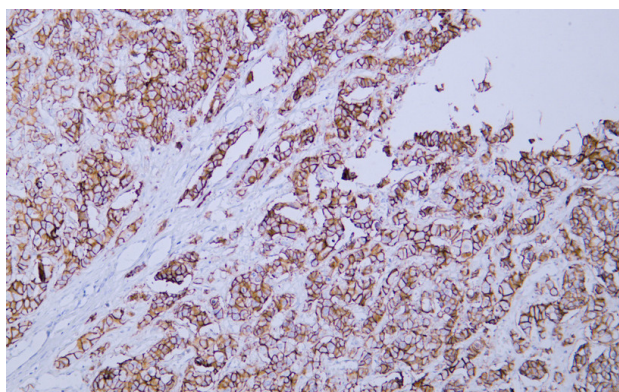
Human breast carcinoma tissue was stained with Anti-Her-2 (ABT338) Antibody

**Nanjing BYabscience technology Co.,Ltd**

网址: [www.njbybio.com](http://www.njbybio.com)

官方热线: 025-5229-8998

监督电话: 15950492658



Human metastatic hepatocellular carcinoma of the breast tissue was stained with Anti-Her-2 (ABT338) Antibody



Nanjing BYabscience technology Co.,Ltd

网址: [www.njbybio.com](http://www.njbybio.com)

官方热线: 025-5229-8998

监督电话: 15950492658