



CD14 mouse mAb(ABT021)

Catalog No	BYab-15529
Isotype	IgG
Reactivity	Human
Applications	IHC;WB;IF
Gene Name	CD14
Protein Name	CD14
Immunogen	Synthesized peptide derived from human CD14
Specificity	The antibody can specifically recognize human CD14 protein.
Formulation	Liquid in PBS containing 50% glycerol, 0.5% BSA and 0.62% sodium azide.
Source	Mouse, Monoclonal/IgG2b, kappa
Purification	The antibody was affinity-purified from mouse ascites by affinity-chromatography using specific immunogen.
Dilution	IHC-p 1:100-500, WB 1:200-1000, IF 1:100-500
Concentration	1 mg/ml
Purity	≥90%
Storage Stability	-20°C/1 year
Synonyms	Monocyte differentiation antigen CD14 (Myeloid cell-specific leucine-rich glycoprotein;CD antigen CD14) [Cleaved into: Monocyte differentiation antigen CD14, urinary form; Monocyte differentiation antigen CD14, membrane-bound form]
Observed Band	
Cell Pathway	Cell membrane ; Lipid-anchor, GPI-anchor . Secreted . Membrane raft . Golgi apparatus . Secreted forms may arise by cleavage of the GPI anchor. .
Tissue Specificity	Detected on macrophages (at protein level) (PubMed:1698311). Expressed strongly on the surface of monocytes and weakly on the surface of granulocytes; also expressed by most tissue macrophages.
Function	function:Cooperates with MD-2 and TLR4 to mediate the innate immune response to bacterial lipopolysaccharide (LPS). Acts via MyD88, TIRAP and TRAF6, leading to NF-kappa-B activation, cytokine secretion and the inflammatory response. Up-regulates cell surface molecules, including adhesion molecules.,online information:CD14 entry,similarity:Contains 11 LRR (leucine-rich) repeats.,subunit:Belongs to the lipopolysaccharide (LPS) receptor, a multi-protein complex containing at least CD14, MD-2 and TLR4.,tissue

Nanjing BYabscience technology Co.,Ltd



specificity: Expressed strongly on the surface of monocytes and weakly on the surface of granulocytes; also expressed by most tissue macrophages.,

Background

The protein encoded by this gene is a surface antigen that is preferentially expressed on monocytes/macrophages. It cooperates with other proteins to mediate the innate immune response to bacterial lipopolysaccharide. Alternative splicing results in multiple transcript variants encoding the same protein. [provided by RefSeq, Mar 2010],

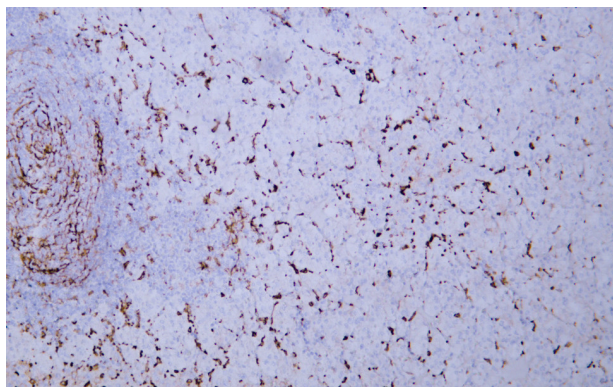
matters needing attention

Avoid repeated freezing and thawing!

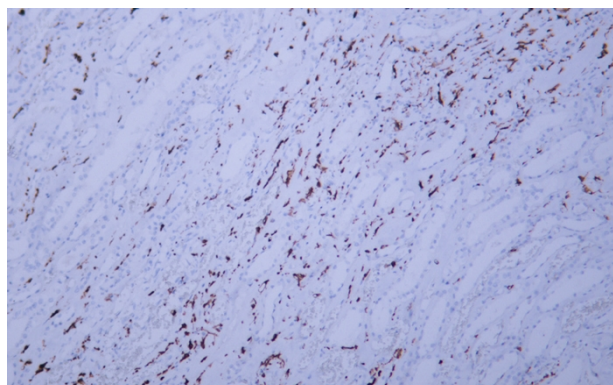
Usage suggestions

This product can be used in immunological reaction related experiments. For more information, please consult technical personnel.

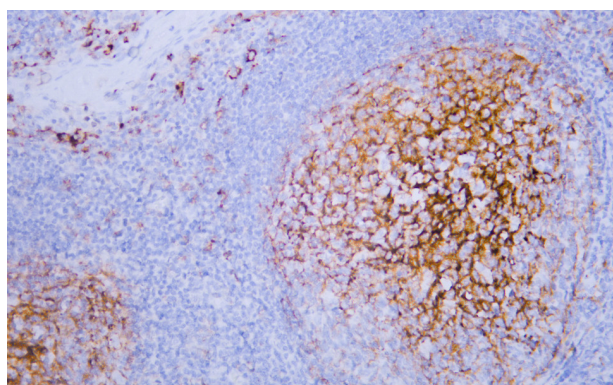
Products Images



Human adrenal gland tissue was stained with anti-CD14(ABT021) antibody.

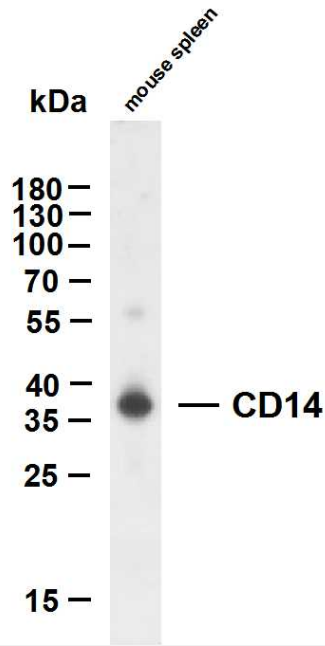


Human kidney tissue was stained with anti-CD14(ABT021) antibody.



Human tonsil tissue was stained with anti-CD14(ABT021) antibody.

Nanjing BYabscience technology Co.,Ltd



Mouse spleen whole cell lysates were separated by 12% SDS-PAGE, and the membrane was blotted with anti-CD14(ABT021) antibody. The HRP-conjugated Goat anti-Mouse IgG(H + L) antibody was used to detect the antibody. Lane 1: mouse spleen
Predicted band size: 40kDa Observed band size: 40kDa