



# MAGE-C1 mouse mAb(ABT251)

<b>Catalog No</b>	BYab-15599
<b>Isotype</b>	IgG
<b>Reactivity</b>	Human; Predict react with Mouse, Rat
<b>Applications</b>	IHC;WB;IF
<b>Gene Name</b>	MAGEC1
<b>Protein Name</b>	MAGE-C1
<b>Immunogen</b>	Synthesized peptide derived from human MAGE-C1
<b>Specificity</b>	The antibody can specifically recognize human MAGE-C1 protein.
<b>Formulation</b>	Liquid in PBS containing 50% glycerol, 0.5% BSA and 0.04% sodium azide.
<b>Source</b>	Mouse, Monoclonal/IgG2b, Kappa
<b>Purification</b>	The antibody was affinity-purified from mouse ascites by affinity-chromatography using specific immunogen.
<b>Dilution</b>	IHC-p 1:100-500, WB 1:200-1000, IF 1:100-500
<b>Concentration</b>	1 mg/ml
<b>Purity</b>	≥90%
<b>Storage Stability</b>	-20°C/1 year
<b>Synonyms</b>	Melanoma-associated antigen C1 (Cancer/testis antigen 7.1;CT7.1;MAGE-C1 antigen)
<b>Observed Band</b>	
<b>Cell Pathway</b>	Testis
<b>Tissue Specificity</b>	Expressed in testis and in tumors of a wide variety of histologic types.
<b>Function</b>	similarity:Contains 1 MAGE domain.,tissue specificity:Expressed in testis and in tumors of a wide variety of histologic types.,
<b>Background</b>	This gene is a member of the melanoma antigen gene (MAGE) family. The proteins of this family are tumor-specific antigens that can be recognized by autologous cytolytic T lymphocytes. This protein contains a large number of unique short repetitive sequences in front of the MAGE-homologous sequence, and therefore is about 800 aa longer than the other MAGE proteins. [provided by RefSeq, Jul 2008],

**Nanjing BYabscience technology Co.,Ltd**

网址: [www.njbybio.com](http://www.njbybio.com)

官方热线: 025-5229-8998

监督电话: 15950492658



**matters needing attention**

Avoid repeated freezing and thawing!

**Usage suggestions**

This product can be used in immunological reaction related experiments. For more information, please consult technical personnel.

Nanjing BYabscience technology Co.,Ltd

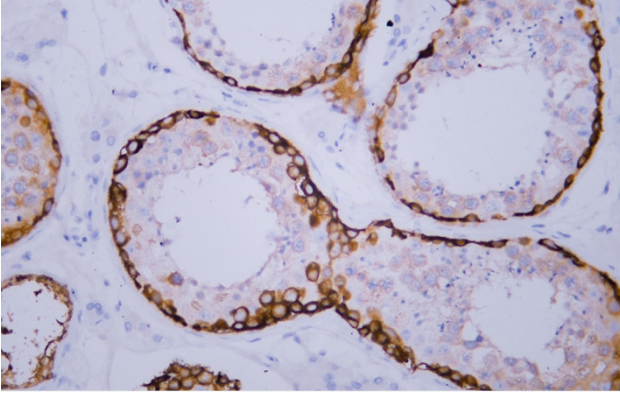
网址: [www.njbybio.com](http://www.njbybio.com)

官方热线: 025-5229-8998

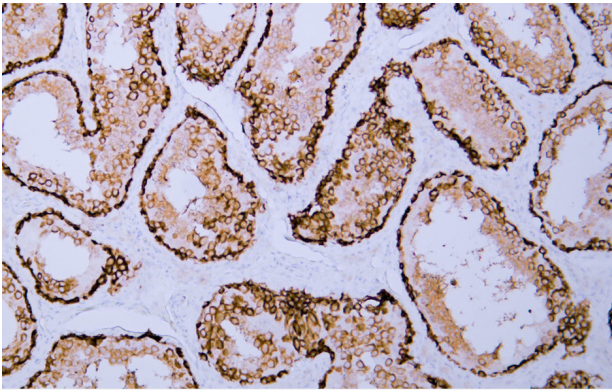
监督电话: 15950492658



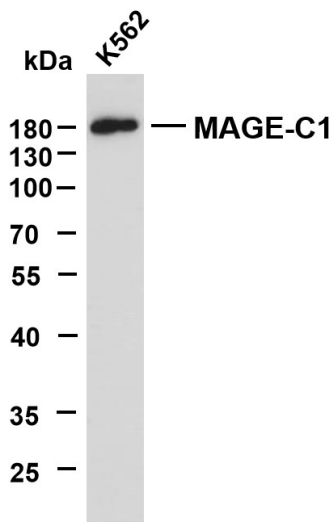
## Products Images



Human testis tissue was stained with Anti-MAGE-C1 (ABT251) Antibody



Human testis tissue was stained with Anti-MAGE-C1 (ABT251) Antibody



K562 whole cell lysates were separated by 10% SDS-PAGE, and the membrane was blotted with anti-MAGE-C1(ABT251)antibody. The HRP-conjugated Goat anti-Mouse IgG(H + L) antibody was used to detect the antibody. Lane 1: K562  
Predicted band size: 124kDa Observed band size: 180kDa