



MUC4 mouse mAb(ABT199)

Catalog No	BYab-15603
Isotype	IgG
Reactivity	Human
Applications	IHC, WB
Gene Name	MUC4
Protein Name	MUC4
Immunogen	Synthesized peptide derived from human MUC4
Specificity	The antibody can specifically recognize human MUC4 protein, and has no cross reaction with MUC2, MUC5AC, MUC6 proteins.
Formulation	Liquid in PBS containing 50% glycerol, 0.5% BSA and 0.173% sodium azide.
Source	Mouse, Monoclonal/IgG2a, Kappa
Purification	The antibody was affinity-purified from mouse ascites by affinity-chromatography using specific immunogen.
Dilution	IHC-p 1:100-500, WB 1:200-1000, IF 1:100-500
Concentration	1 mg/ml
Purity	≥90%
Storage Stability	-20°C/1 year
Synonyms	Mucin-4 (MUC-4; Ascites sialoglycoprotein; ASGP; Pancreatic adenocarcinoma mucin; Testis mucin; Tracheobronchial mucin) [Cleaved into: Mucin-4 alpha chain (Ascites sialoglycoprotein 1; ASGP-1); Mucin-4 beta chain (Ascites sialoglycoprotein 2; ASGP-2)]
Observed Band	
Cell Pathway	[Mucin-4 beta chain]: Cell membrane ; Single-pass membrane protein . Isoforms lacking the Cys-rich region, EGF-like domains and transmembrane region are secreted. Secretion occurs by splicing or proteolytic processing. . ; [Mucin-4 alpha chain]: Cell membrane . Secreted . Forms a complex with Mucin-4 beta chain at the cell membrane. . ; [Isoform 3]: Cell membrane ; Single-pass membrane protein . ; [Isoform 11]: Secreted . ; [Isoform 15]: Secreted . ; [Isoform 17]: Cell membrane ; Single-pass membrane protein .
Tissue Specificity	Expressed in the thymus, thyroid, lung, trachea, esophagus, stomach, small intestine, colon, testis, prostate, ovary, uterus, placenta, and mammary and salivary glands. Expressed in carcinomas arising from some of these epithelia, such as lung cancers, squamous cell carcinomas of the upper aerodigestive tract, mammary carcinomas, biliary tract, colon, and cervix cancers. Minimally or not

Nanjing BYabscience technology Co.,Ltd



expressed in the normal pancreas or chronic pancreatitis, but is highly expressed in pancreatic tumors and pancreatic tumor cell lines.

Function

alternative products:Additional isoforms exist,developmental stage:Expressed early in the primitive gut before respiratory and digestive epithelial cells have acquired their tissue and cell specificity. Expressed at the basal surface of the epithelium from week 14 to 26 weeks and then predominantly localized in only parietal cells. Immediately before birth, found in the cytoplasm of the mucous columnar epithelial cells. In the embryo expressed in skin, then disappears late in gestation.,function:May play a role in tumor progression. Ability to promote tumor growth may be mainly due to repression of apoptosis as opposed to proliferation. Has anti-adhesive properties. Seems to alter cellular behavior through both anti-adhesive effects on cell-cell and cell-extracellular matrix interactions and in its ability to act as an intramembrane ligand for ERBB2. Plays an important role in cell proli

Background

The major constituents of mucus, the viscous secretion that covers epithelial surfaces such as those in the trachea, colon, and cervix, are highly glycosylated proteins called mucins. These glycoproteins play important roles in the protection of the epithelial cells and have been implicated in epithelial renewal and differentiation. This gene encodes an integral membrane glycoprotein found on the cell surface, although secreted isoforms may exist. At least two dozen transcript variants of this gene have been found, although for many of them the full-length transcript has not been determined or they are found only in tumor tissues. This gene contains a region in the coding sequence which has a variable number (>100) of 48 nt tandem repeats. [provided by RefSeq, Jul 2008],

matters needing attention

Avoid repeated freezing and thawing!

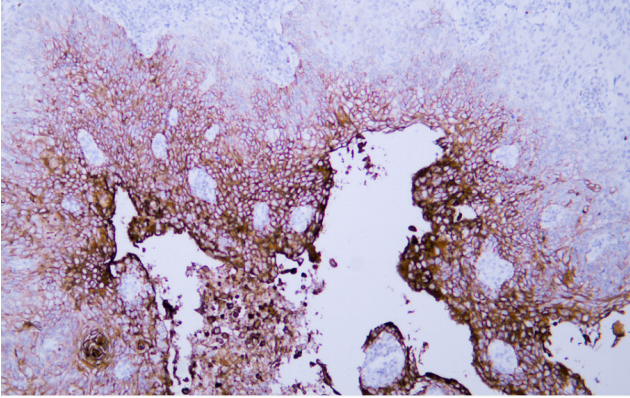
Usage suggestions

This product can be used in immunological reaction related experiments. For more information, please consult technical personnel.

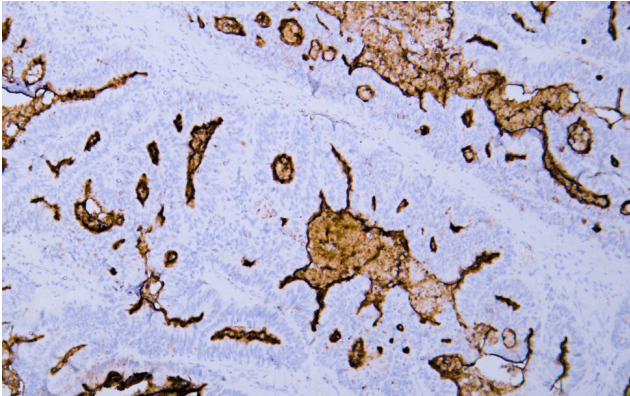
Nanjing BYabscience technology Co.,Ltd



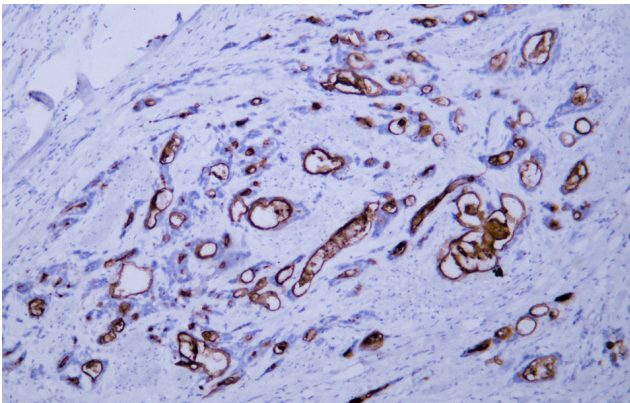
Products Images



Human cervical squamous cell carcinoma tissue was stained with Anti-MUC4 (ABT199) Antibody



Human colon carcinoma tissue was stained with Anti-MUC4 (ABT199) Antibody



Human gastric adenocarcinoma tissue was stained with Anti-MUC4 (ABT199) Antibody