



S100P mouse mAb(ABT229)

Catalog No	BYab-15622
Isotype	IgG
Reactivity	Human
Applications	IHC;IF
Gene Name	S100P S100E
Protein Name	S100P
Immunogen	Synthesized peptide derived from human S100P
Specificity	The antibody can specifically recognize human S100P protein.
Formulation	Liquid in PBS containing 50% glycerol, 0.5% BSA and 0.124% sodium azide.
Source	Mouse, Monoclonal/IgG1, Kappa
Purification	The antibody was affinity-purified from mouse ascites by affinity-chromatography using specific immunogen.
Dilution	IHC-p 1:100-500, IF 1:100-500
Concentration	1 mg/ml
Purity	≥90%
Storage Stability	-20°C/1 year
Synonyms	Protein S100-P (Protein S100-E;S100 calcium-binding protein P)
Observed Band	
Cell Pathway	Nucleus. Cytoplasm. Cell projection, microvillus membrane. Colocalizes with S100PBP in the nucleus. Colocalizes with EZR in the microvilli in a calcium-dependent manner.
Tissue Specificity	Detected in all of the tissues except brain, testis and small intestine, expression level is higher in placenta, heart, lung, skeletal muscle, spleen and leukocyte. Up-regulated in various pancreatic ductal adenocarcinomas and pancreatic intraepithelial neoplasias.
Function	miscellaneous:This protein binds two calcium ions.,similarity:Belongs to the S-100 family.,similarity:Contains 2 EF-hand domains.,subcellular location:Colocalizes with S100PBP in the nucleus.,subunit:Homodimer. Interacts with S100PBP and S100Z.,tissue specificity:Up-regulated in various pancreatic ductal adenocarcinomas and pancreatic intraepithelial neoplasias.,
Background	The protein encoded by this gene is a member of the S100 family of proteins containing 2 EF-hand calcium-binding motifs. S100 proteins are localized in the cytoplasm and/or nucleus of a wide range of cells, and involved in the regulation

Nanjing BYabscience technology Co.,Ltd



of a number of cellular processes such as cell cycle progression and differentiation. S100 genes include at least 13 members which are located as a cluster on chromosome 1q21; however, this gene is located at 4p16. This protein, in addition to binding Ca^{2+} , also binds Zn^{2+} and Mg^{2+} . This protein may play a role in the etiology of prostate cancer. [provided by RefSeq, Jul 2008],

matters needing attention

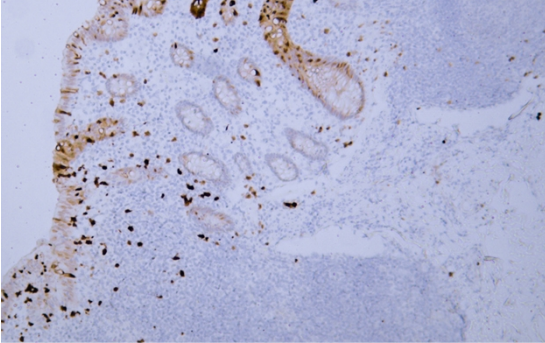
Avoid repeated freezing and thawing!

Usage suggestions

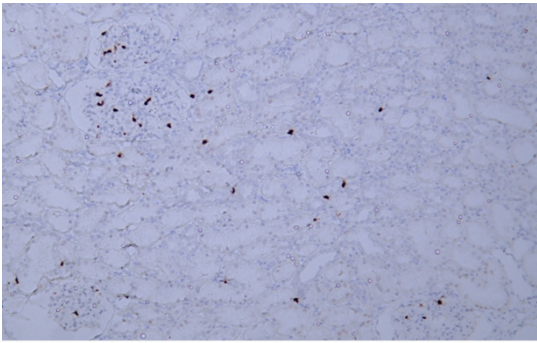
This product can be used in immunological reaction related experiments. For more information, please consult technical personnel.



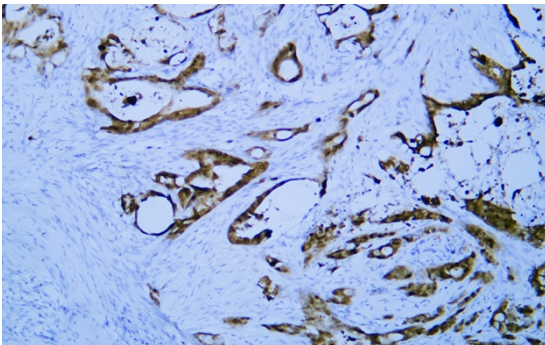
Products Images



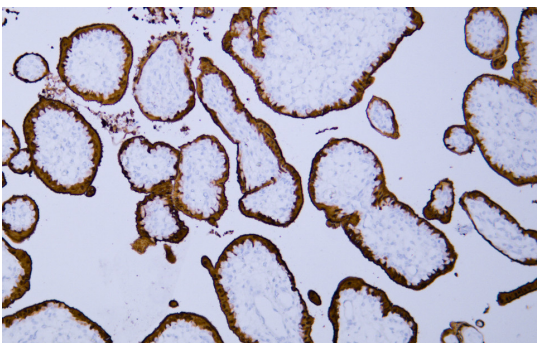
Human appendix tissue was stained with Anti-S100P (ABT229) Antibody



Human kidney tissue was stained with Anti-S100P (ABT229) Antibody



Human pancreatic cancer tissue was stained with Anti-S100P (ABT229) Antibody



Human placenta tissue was stained with Anti-S100P (ABT229) Antibody

Nanjing BYabscience technology Co.,Ltd

网址: www.njbybio.com

官方热线: 025-5229-8998

监督电话: 15950492658