



## PSM rabbit pAb

Catalog No	BYab-15718
Isotype	IgG
Reactivity	Human;Rat;Mouse;
Applications	WB;IHC
Gene Name	FOLH1 FOLH NAALAD1 PSM PSMA GIG27
Protein Name	PSM
Immunogen	Synthesized peptide derived from human PSM AA range: 571-620
Specificity	This antibody detects endogenous levels of Human PSM
Formulation	Liquid in PBS containing 50% glycerol, 0.5% BSA and 0.02% sodium azide.
Source	Polyclonal, Rabbit,IgG
Purification	The antibody was affinity-purified from rabbit serum by affinity-chromatography using specific immunogen.
Dilution	WB 1:500-2000;IHC-p 1:50-300
Concentration	1 mg/ml
Purity	≥90%
Storage Stability	-20°C/1 year
Synonyms	Glutamate carboxypeptidase 2 (EC 3.4.17.21;Cell growth-inhibiting gene 27 protein;Folate hydrolase 1;Folylpoly-gamma-glutamate carboxypeptidase;FGCP;Glutamate carboxypeptidase II;GCPII;Membrane glutamate carboxypeptidase;mGCP;N-acetylated-alpha-linked acidic dipeptidase I;NAALADase I;Prostate-specific membrane antigen;PSM;PSMA;Pteroylpoly-gamma-glutamate carboxypeptidase)
Observed Band	
Cell Pathway	Cell membrane ; Single-pass type II membrane protein .; [Isoform PSMA']: Cytoplasm .
Tissue Specificity	Highly expressed in prostate epithelium. Detected in urinary bladder, kidney, testis, ovary, fallopian tube, breast, adrenal gland, liver, esophagus, stomach, small intestine, colon and brain (at protein level). Detected in the small intestine, brain, kidney, liver, spleen, colon, trachea, spinal cord and the capillary endothelium of a variety of tumors. Expressed specifically in jejunum brush border membranes. In the brain, highly expressed in the ventral striatum and brain stem. Also expressed in fetal liver and kidney. Isoform PSMA' is the most abundant form

Nanjing BYabs science technology Co.,Ltd



in normal prostate. Isoform PSMA-1 is the most abundant form in primary prostate tumors. Isoform PSMA-3 is also found in normal prostate as well as in brain and liver. Isoform PSMA-9 is specifically expressed in prostate cancer.

#### Function

#### Background

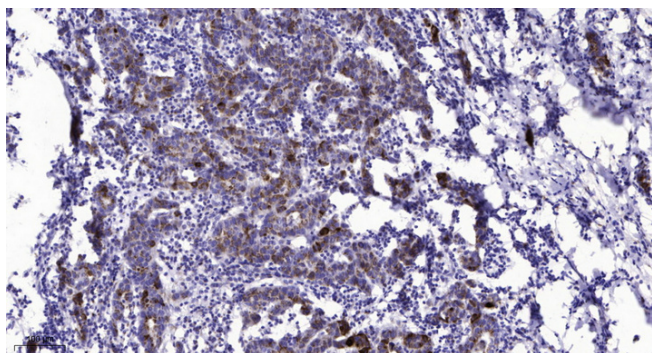
#### matters needing attention

Avoid repeated freezing and thawing!

#### Usage suggestions

This product can be used in immunological reaction related experiments. For more information, please consult technical personnel.

### Products Images



Immunohistochemical analysis of paraffin-embedded human Breast cancer. 1, Antibody was diluted at 1:200(4° overnight). 2, Tris-EDTA,pH9.0 was used for antigen retrieval. 3,Secondary antibody was diluted at 1:200(room temperature, 45min).