



# IRX1 Polyclonal Antibody

<b>Catalog No</b>	BYab-15772
<b>Isotype</b>	IgG
<b>Reactivity</b>	Human;Mouse
<b>Applications</b>	WB;IHC;IF;ELISA
<b>Gene Name</b>	IRX1
<b>Protein Name</b>	Iroquois-class homeodomain protein IRX-1
<b>Immunogen</b>	The antiserum was produced against synthesized peptide derived from human IRX1. AA range:221-270
<b>Specificity</b>	IRX1 Polyclonal Antibody detects endogenous levels of IRX1 protein.
<b>Formulation</b>	Liquid in PBS containing 50% glycerol, 0.5% BSA and 0.02% sodium azide.
<b>Source</b>	Polyclonal, Rabbit,IgG
<b>Purification</b>	The antibody was affinity-purified from rabbit antiserum by affinity-chromatography using epitope-specific immunogen.
<b>Dilution</b>	Western Blot: 1/500 - 1/2000. Immunohistochemistry: 1/100 - 1/300. Immunofluorescence: 1/200 - 1/1000. ELISA: 1/40000. Not yet tested in other applications.
<b>Concentration</b>	1 mg/ml
<b>Purity</b>	≥90%
<b>Storage Stability</b>	-20°C/1 year
<b>Synonyms</b>	IRX1; IRXA1; Iroquois-class homeodomain protein IRX-1; Homeodomain protein IRXA1; Iroquois homeobox protein 1
<b>Observed Band</b>	47kD
<b>Cell Pathway</b>	Nucleus .
<b>Tissue Specificity</b>	Brain,Lung,
<b>Function</b>	similarity:Belongs to the TALE/IRO homeobox family.,similarity:Contains 1 homeobox DNA-binding domain.,
<b>Background</b>	This gene encodes a member of the Iroquois homeobox protein family. Homeobox genes in this family are involved in pattern formation in the embryo. The gene product has been identified as a tumor suppressor in gastric (PMID: 21602894, 20440264) and head and neck cancers (PMID: 18559491). A pseudogene of this gene is located on chromosome 13. [provided by RefSeq, Dec 2011],

**Nanjing BYabs science technology Co.,Ltd**



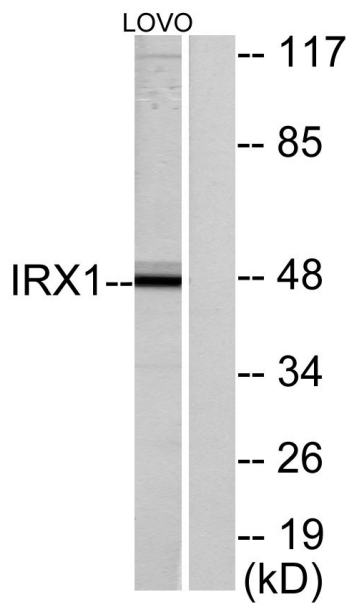
**matters needing attention**

Avoid repeated freezing and thawing!

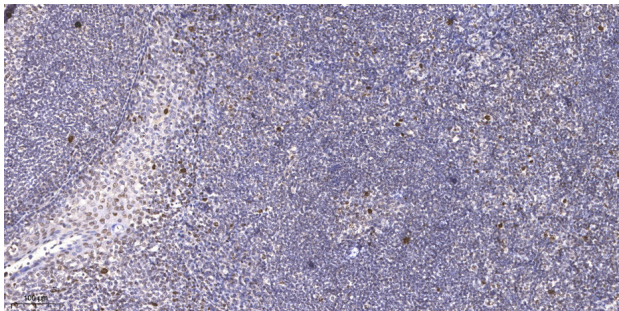
**Usage suggestions**

This product can be used in immunological reaction related experiments. For more information, please consult technical personnel.

**Products Images**



Western blot analysis of lysates from LOVO cells, using IRX1 Antibody. The lane on the right is blocked with the synthesized peptide.



Immunohistochemical analysis of paraffin-embedded human tonsil. 1, Antibody was diluted at 1:200(4° overnight). 2, Tris-EDTA,pH9.0 was used for antigen retrieval. 3,Secondary antibody was diluted at 1:200(room temperature, 45min).

**Nanjing BYabs science technology Co.,Ltd**

网址: [www.njbybio.com](http://www.njbybio.com)

官方热线: 025-5229-8998

监督电话: 15950492658