



# CMTM1 Polyclonal Antibody

Catalog No	BYab-15889
Isotype	IgG
Reactivity	Human;Rat;Mouse;
Applications	IF;ELISA
Gene Name	CMTM1
Protein Name	CKLF-like MARVEL transmembrane domain-containing protein 1
Immunogen	The antiserum was produced against synthesized peptide derived from human CKLF1. AA range:120-169
Specificity	CMTM1 Polyclonal Antibody detects endogenous levels of CMTM1 protein.
Formulation	Liquid in PBS containing 50% glycerol, 0.5% BSA and 0.02% sodium azide.
Source	Polyclonal, Rabbit,IgG
Purification	The antibody was affinity-purified from rabbit antiserum by affinity-chromatography using epitope-specific immunogen.
Dilution	Immunofluorescence: 1/200 - 1/1000. ELISA: 1/40000. Not yet tested in other applications.
Concentration	1 mg/ml
Purity	≥90%
Storage Stability	-20°C/1 year
Synonyms	CMTM1; CKLFSF1; CKLF-like MARVEL transmembrane domain-containing protein 1; Chemokine-like factor superfamily member 1
Observed Band	
Cell Pathway	Membrane; Multi-pass membrane protein.
Tissue Specificity	Highly expressed in testis.
Function	similarity:Belongs to the chemokine-like factor family.,similarity:Contains 1 MARVEL domain.,tissue specificity:Highly expressed in testis.,
Background	This gene belongs to the chemokine-like factor gene superfamily, a novel family that is similar to the chemokine and the transmembrane 4 superfamilies of signaling molecules. The protein encoded by this gene may play an important role in testicular development. Alternatively spliced transcript variants encoding different isoforms have been identified. Naturally occurring read-through transcription occurs between this locus and the neighboring locus CKLF (chemokine-like factor).[provided by RefSeq, Feb 2011],

Nanjing BYabscience technology Co.,Ltd



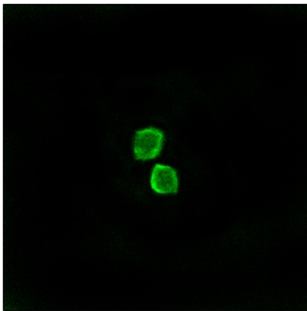
**matters needing attention**

Avoid repeated freezing and thawing!

**Usage suggestions**

This product can be used in immunological reaction related experiments. For more information, please consult technical personnel.

## Products Images



Immunofluorescence analysis of MCF7 cells, using CKLF1 Antibody. The picture on the right is blocked with the synthesized peptide.