



Ephrin-A3 Polyclonal Antibody

Catalog No	BYab-15900
Isotype	IgG
Reactivity	Human;Mouse;Rat
Applications	WB;IHC;IF;ELISA
Gene Name	EFNA3
Protein Name	Ephrin-A3
Immunogen	The antiserum was produced against synthesized peptide derived from human EFNA3. AA range:161-210
Specificity	Ephrin-A3 Polyclonal Antibody detects endogenous levels of Ephrin-A3 protein.
Formulation	Liquid in PBS containing 50% glycerol, 0.5% BSA and 0.02% sodium azide.
Source	Polyclonal, Rabbit,IgG
Purification	The antibody was affinity-purified from rabbit antiserum by affinity-chromatography using epitope-specific immunogen.
Dilution	Western Blot: 1/500 - 1/2000. Immunohistochemistry: 1/100 - 1/300. Immunofluorescence: 1/200 - 1/1000. ELISA: 1/10000. Not yet tested in other applications.
Concentration	1 mg/ml
Purity	≥90%
Storage Stability	-20°C/1 year
Synonyms	EFNA3; EFL2; EPLG3; LERK3; Ephrin-A3; EFL-2; EHK1 ligand; EHK1-L; EPH-related receptor tyrosine kinase ligand 3; LERK-3
Observed Band	38kD
Cell Pathway	Cell membrane; Lipid-anchor, GPI-anchor.
Tissue Specificity	Expressed in brain, skeletal muscle, spleen, thymus, prostate, testis, ovary, small intestine, and peripheral blood leukocytes.
Function	similarity:Belongs to the ephrin family.,tissue specificity:Expressed in brain, skeletal muscle, spleen, thymus, prostate, testis, ovary, small intestine, and peripheral blood leukocytes.,
Background	This gene encodes a member of the ephrin (EPH) family. The ephrins and EPH-related receptors comprise the largest subfamily of receptor protein-tyrosine kinases and have been implicated in mediating developmental events, especially in the nervous system and in erythropoiesis. Based on their structures and sequence relationships, ephrins are divided into the ephrin-A (EFNA) class, which

Nanjing BYabscience technology Co.,Ltd



are anchored to the membrane by a glycosylphosphatidylinositol linkage, and the ephrin-B (EFNB) class, which are transmembrane proteins. This gene encodes an EFNA class ephrin. [provided by RefSeq, Jul 2008],

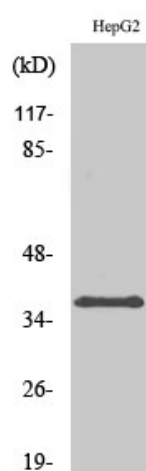
matters needing attention

Avoid repeated freezing and thawing!

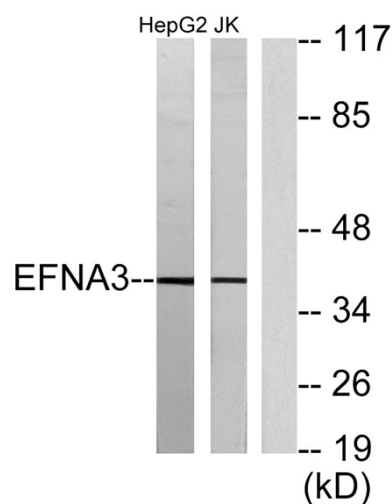
Usage suggestions

This product can be used in immunological reaction related experiments. For more information, please consult technical personnel.

Products Images



Western Blot analysis of various cells using Ephrin-A3 Polyclonal Antibody



Western blot analysis of lysates from HepG2 and Jurkat cells, using EFNA3 Antibody. The lane on the right is blocked with the synthesized peptide.

Nanjing BYabscience technology Co.,Ltd

网址: www.njbybio.com

官方热线: 025-5229-8998

监督电话: 15950492658