



FGF-13 Polyclonal Antibody

Catalog No	BYab-15907
Isotype	IgG
Reactivity	Human;Mouse;Rat
Applications	WB;ELISA
Gene Name	FGF13
Protein Name	Fibroblast growth factor 13
Immunogen	The antiserum was produced against synthesized peptide derived from human FGF13. AA range:154-203
Specificity	FGF-13 Polyclonal Antibody detects endogenous levels of FGF-13 protein.
Formulation	Liquid in PBS containing 50% glycerol, 0.5% BSA and 0.02% sodium azide.
Source	Polyclonal, Rabbit,IgG
Purification	The antibody was affinity-purified from rabbit antiserum by affinity-chromatography using epitope-specific immunogen.
Dilution	Western Blot: 1/500 - 1/2000. ELISA: 1/5000. Not yet tested in other applications.
Concentration	1 mg/ml
Purity	≥90%
Storage Stability	-20°C/1 year
Synonyms	FGF13; FHF2; Fibroblast growth factor 13; FGF-13; Fibroblast growth factor homologous factor 2; FHF-2
Observed Band	28kD
Cell Pathway	[Isoform 1]: Nucleus .; [Isoform 2]: Cytoplasm . Nucleus .; [Isoform 3]: Cytoplasm . Nucleus .; [Isoform 4]: Cytoplasm . Nucleus .; [Isoform 5]: Cytoplasm . Nucleus .; Cell projection, filopodium . Cell projection, growth cone . Cell projection, dendrite . Cell membrane, sarcolemma . Cytoplasm . Not secreted. Localizes to the lateral membrane and intercalated disks of myocytes. .
Tissue Specificity	Ubiquitously expressed. Predominantly expressed in the nervous system.
Function	function:Probably involved in nervous system development and function.,similarity:Belongs to the heparin-binding growth factors family.,tissue specificity:Nervous system.,
Background	The protein encoded by this gene is a member of the fibroblast growth factor (FGF) family. FGF family members possess broad mitogenic and cell survival activities, and are involved in a variety of biological processes, including

Nanjing BYabscience technology Co.,Ltd



embryonic development, cell growth, morphogenesis, tissue repair, tumor growth, and invasion. This gene is located in a region on chromosome X, which is associated with Borjeson-Forssman-Lehmann syndrome (BFLS), making it a possible candidate gene for familial cases of the BFLS, and for other syndromal and nonspecific forms of X-linked mental retardation mapping to this region. Alternative splicing of this gene at the 5' end results in several transcript variants encoding different isoforms with different N-termini. [provided by RefSeq, Nov 2008],

matters needing attention

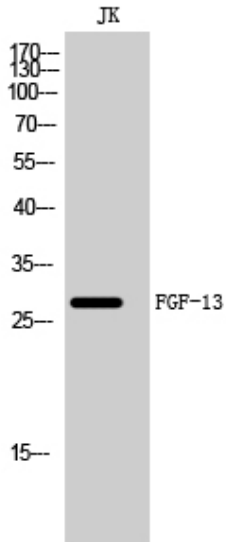
Avoid repeated freezing and thawing!

Usage suggestions

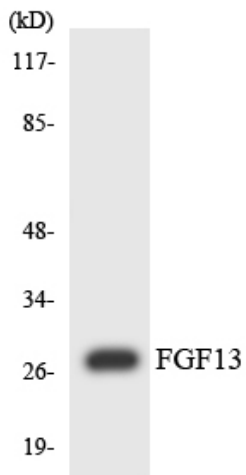
This product can be used in immunological reaction related experiments. For more information, please consult technical personnel.



Products Images



Western Blot analysis of JK cells using FGF-13
Polyclonal Antibody diluted at 1:500



Western blot analysis of the lysates from Jurkat cells
using FGF13 antibody.