



# GDF-15 Polyclonal Antibody

<b>Catalog No</b>	BYab-15914
<b>Isotype</b>	IgG
<b>Reactivity</b>	Human;Rat;Mouse;
<b>Applications</b>	WB;ELISA
<b>Gene Name</b>	GDF15
<b>Protein Name</b>	Growth/differentiation factor 15
<b>Immunogen</b>	The antiserum was produced against synthesized peptide derived from human GDF15. AA range:31-80
<b>Specificity</b>	GDF-15 Polyclonal Antibody detects endogenous levels of GDF-15 protein.
<b>Formulation</b>	Liquid in PBS containing 50% glycerol, 0.5% BSA and 0.02% sodium azide.
<b>Source</b>	Polyclonal, Rabbit,IgG
<b>Purification</b>	The antibody was affinity-purified from rabbit antiserum by affinity-chromatography using epitope-specific immunogen.
<b>Dilution</b>	Western Blot: 1/500 - 1/2000. ELISA: 1/40000. Not yet tested in other applications.
<b>Concentration</b>	1 mg/ml
<b>Purity</b>	≥90%
<b>Storage Stability</b>	-20°C/1 year
<b>Synonyms</b>	GDF15; MIC1; PDF; PLAB; PTGFB; Growth/differentiation factor 15; GDF-15; Macrophage inhibitory cytokine 1; MIC-1; NSAID-activated gene 1 protein; NAG-1; NSAID-regulated gene 1 protein; NRG-1; Placental TGF-beta; Placental bone morphogenetic
<b>Observed Band</b>	37kD
<b>Cell Pathway</b>	Secreted .
<b>Tissue Specificity</b>	Highly expressed in placenta, with lower levels in prostate and colon and some expression in kidney (PubMed:9348093). Detected in plasma (at protein level) (PubMed:28572090, PubMed:29046435).
<b>Function</b>	similarity:Belongs to the TGF-beta family.,subunit:Homodimer; disulfide-linked.,tissue specificity:Highly expressed in placenta, with lower levels in prostate and colon and some expression in kidney.,
<b>Background</b>	growth differentiation factor 15(GDF15) Homo sapiens This gene encodes a secreted ligand of the TGF-beta (transforming growth factor-beta) superfamily of

**Nanjing BYabscience technology Co.,Ltd**



proteins. Ligands of this family bind various TGF-beta receptors leading to recruitment and activation of SMAD family transcription factors that regulate gene expression. The encoded preproprotein is proteolytically processed to generate each subunit of the disulfide-linked homodimer. The protein is expressed in a broad range of cell types, acts as a pleiotropic cytokine and is involved in the stress response program of cells after cellular injury. Increased protein levels are associated with disease states such as tissue hypoxia, inflammation, acute injury and oxidative stress. [provided by RefSeq, Aug 2016],

**matters needing attention**

Avoid repeated freezing and thawing!

**Usage suggestions**

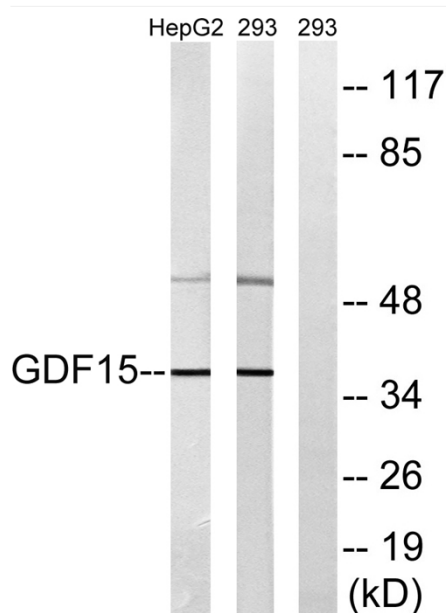
This product can be used in immunological reaction related experiments. For more information, please consult technical personnel.



## Products Images



Western Blot analysis of various cells using GDF-15 Polyclonal Antibody diluted at 1:1000



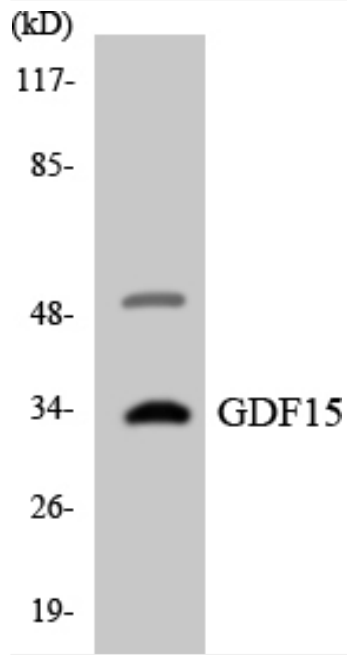
Western blot analysis of lysates from 293 and HepG2 cells, using GDF15 Antibody. The lane on the right is blocked with the synthesized peptide.

Nanjing BYabs science technology Co.,Ltd

网址: [www.njbybio.com](http://www.njbybio.com)

官方热线: 025-5229-8998

监督电话: 15950492658



Western blot analysis of the lysates from HT-29 cells using GDF15 antibody.