



GHITM Polyclonal Antibody

| | |
|----------------------------------|---|
| Catalog No | BYab-15917 |
| Isotype | IgG |
| Reactivity | Human;Rat;Mouse; |
| Applications | WB;IHC;IF;ELISA |
| Gene Name | GHITM |
| Protein Name | Growth hormone-inducible transmembrane protein |
| Immunogen | The antiserum was produced against synthesized peptide derived from human GHITM. AA range:31-80 |
| Specificity | GHITM Polyclonal Antibody detects endogenous levels of GHITM protein. |
| Formulation | Liquid in PBS containing 50% glycerol, 0.5% BSA and 0.02% sodium azide. |
| Source | Polyclonal, Rabbit,IgG |
| Purification | The antibody was affinity-purified from rabbit antiserum by affinity-chromatography using epitope-specific immunogen. |
| Dilution | WB: 1/500 - 1/2000. IHC: 1/100 - 1/300. ELISA: 1/10000.. IF 1:50-200 |
| Concentration | 1 mg/ml |
| Purity | ≥90% |
| Storage Stability | -20°C/1 year |
| Synonyms | GHITM; DERP2; MICS1; TMBIM5; My021; Growth hormone-inducible transmembrane protein; Dermal papilla-derived protein 2; Mitochondrial morphology and cristae structure 1; MICS1; Transmembrane BAX inhibitor motif-containing protein 5 |
| Observed Band | 37kD |
| Cell Pathway | Mitochondrion inner membrane ; Multi-pass membrane protein . |
| Tissue Specificity | Blood,Brain,Fetal brain,Hair follicle dermal papilla,Kidney |
| Function | similarity:Belongs to the BI1 family., |
| Background | similarity:Belongs to the BI1 family., |
| matters needing attention | Avoid repeated freezing and thawing! |

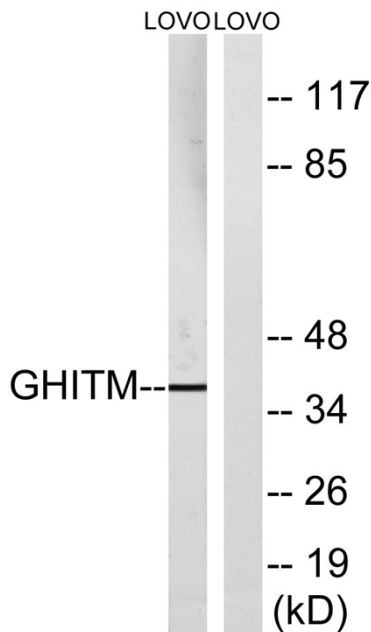
Nanjing BYabscience technology Co.,Ltd



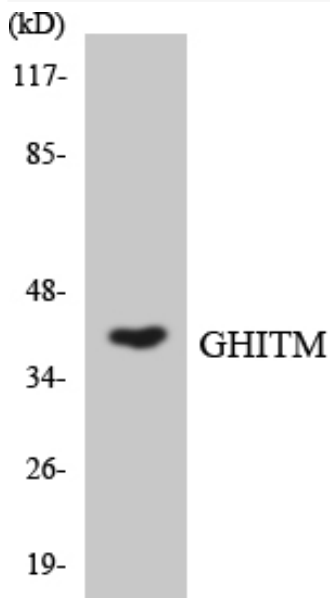
Usage suggestions

This product can be used in immunological reaction related experiments. For more information, please consult technical personnel.

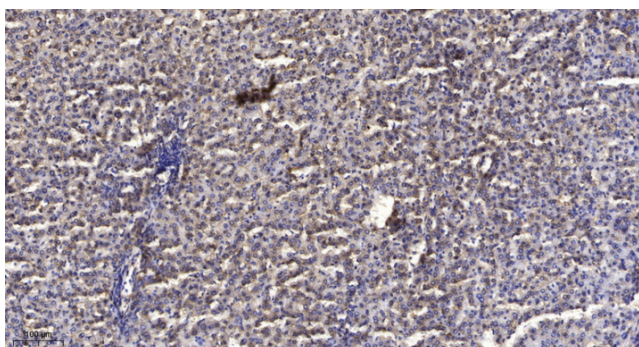
Products Images



Western blot analysis of lysates from LOVO cells, using GHITM Antibody. The lane on the right is blocked with the synthesized peptide.



Western blot analysis of the lysates from HepG2 cells using GHITM antibody.



Immunohistochemical analysis of paraffin-embedded human liver cancer. 1, Antibody was diluted at 1:200(4° overnight). 2, Tris-EDTA,pH9.0 was used for antigen retrieval. 3,Secondary antibody was diluted at 1:200(room temperature, 45min).