



# Inhibin $\beta$ -C Polyclonal Antibody

Catalog No	BYab-15941
Isotype	IgG
Reactivity	Human;Rat;Mouse;
Applications	WB;IHC;IF;ELISA
Gene Name	INHBC
Protein Name	Inhibin beta C chain
Immunogen	The antiserum was produced against synthesized peptide derived from human Inhibin beta-C. AA range:80-129
Specificity	Inhibin $\beta$ -C Polyclonal Antibody detects endogenous levels of Inhibin $\beta$ -C protein.
Formulation	Liquid in PBS containing 50% glycerol, 0.5% BSA and 0.02% sodium azide.
Source	Polyclonal, Rabbit,IgG
Purification	The antibody was affinity-purified from rabbit antiserum by affinity-chromatography using epitope-specific immunogen.
Dilution	WB: 1/500 - 1/2000. IHC: 1/100 - 1/300. ELISA: 1/5000.. IF 1:50-200
Concentration	1 mg/ml
Purity	$\geq 90\%$
Storage Stability	-20°C/1 year
Synonyms	INHBC; Inhibin beta C chain; Activin beta-C chain
Observed Band	30kD
Cell Pathway	Secreted .
Tissue Specificity	Expressed in benign prostatic hyperplasia.
Function	function:Inhibins and activins inhibit and activate, respectively, the secretion of follitropin by the pituitary gland. Inhibins/activins are involved in regulating a number of diverse functions such as hypothalamic and pituitary hormone secretion, gonadal hormone secretion, germ cell development and maturation, erythroid differentiation, insulin secretion, nerve cell survival, embryonic axial development or bone growth, depending on their subunit composition. Inhibins appear to oppose the functions of activins.,similarity:Belongs to the TGF-beta family.,subunit:Homodimeric or heterodimeric through association with alpha and beta subunits, linked by one or more disulfide bonds. Inhibins are heterodimers of one alpha and one beta subunit. Activins are homo- or heterodimers of beta subunits only.,tissue specificity:Expressed in benign prostatic hyperplasia.,

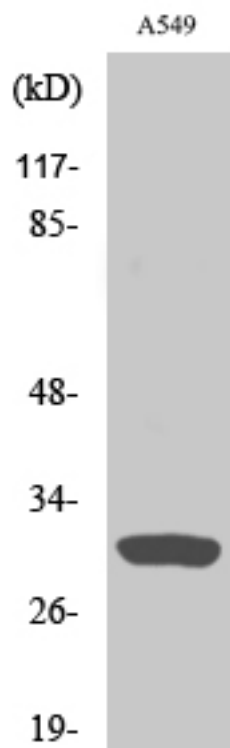
Nanjing BYabs science technology Co.,Ltd



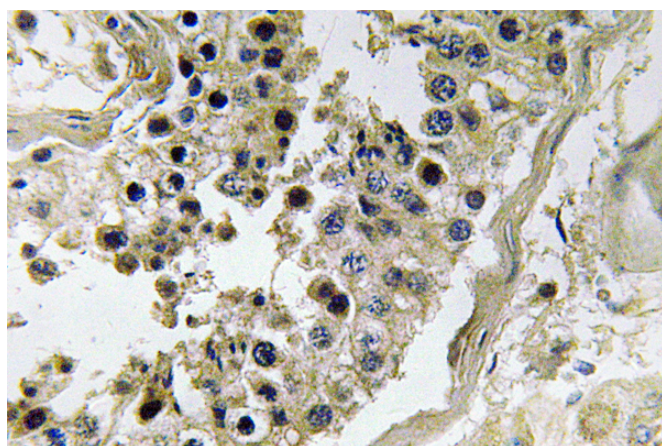
Background	This gene encodes a member of the TGF-beta (transforming growth factor-beta) superfamily of proteins. The encoded preproprotein is proteolytically processed to generate a subunit of homodimeric and heterodimeric activin complexes. The heterodimeric complex may function in the inhibition of activin A signaling. Transgenic mice overexpressing this gene exhibit defects in testis, liver and prostate. [provided by RefSeq, Aug 2016],
matters needing attention	Avoid repeated freezing and thawing!
Usage suggestions	This product can be used in immunological reaction related experiments. For more information, please consult technical personnel.



## Products Images



Western Blot analysis of various cells using Inhibin  $\beta$ -C Polyclonal Antibody



Immunohistochemistry analysis of Inhibin  $\beta$ -C antibody in paraffin-embedded human testis tissue.

Nanjing BYabs science technology Co.,Ltd

网址: [www.njbybio.com](http://www.njbybio.com)

官方热线: 025-5229-8998

监督电话: 15950492658

